



ANCHOR DIAMOND INVASIVE SPECIES SURVEY 2019:

Anna Kuhne and Lauren Mercier

Type of Work Performed: Terrestrial invasive species surveying and scoping for training sights

Date: July 31st, 2019

Address: 1 – 17 Middleline Rd

County: Saratoga County

Latitude and Longitude: 42.937313, -73.874097

Website: <https://www.alltrails.com/trail/us/new-york/anchor-diamond-ballston-spa--2>

Lead Contact Information for Project: Kristopher Williams, Capital Mohawk PRISM

Site Owner Contact Information: Town of Ballston Spa

Project Description: Surveying for terrestrial invasive species was done and points for the species were uploaded on to iMapInvasives.

Invasive Species Present at Anchor Diamond Park:

Common Name	Scientific Name	Locations (GPS)	Growth Type	Phenology	Distribution/ Abundance
Norway Maple	<i>Acer platanoides</i>	42.93925 -73.87541	Tree	Vegetative	Dense
Hemlock Woolly Adelgid	<i>Adelges tsugae</i>	42.93784 -73.89081	Pest	N/A	Record from 2018
Tree of Heaven	<i>Ailanthus altissima</i>	42.93768 -73.8875	Tree	Vegetative	Record from 2018
Garlic Mustard	<i>Alliaria petiolate</i>	42.93925 -73.87547	Herbaceous	In seed	Dense
Japanese Barberry	<i>Berberis thunbergii</i>	42.93796 -73.88318	Shrub	Vegetative	Sparse
Daphne	<i>Daphne mezereum</i>	42.93952 -73.8776	Herbaceous	Vegetative	Record from 2018
Burning Bush	<i>Euonymus alatus</i>	42.93726 -73.89063	Shrub	Vegetative	Record from 2018
Privet	<i>Ligustrum spp</i>	42.93904 -73.88137	Shrub	Vegetative	Record from 2018
Honeysuckle	<i>Lonicera spp</i>	42.93929 -73.87505	Shrub	In seed	Dense
Common Buckthorn	<i>Rhamnus cathartica</i>	42.9387 -73.87812	Tree	Vegetative	Dense
Multiflora Rose	<i>Rosa multiflora</i>	42.93885 -73.87745	Shrub	Vegetative	Dense
Glossy Buckthorn	<i>Frangula alnus</i>	42.93852 -73.88087	Tree	In seed	Record from 2017



Oriental Bittersweet	<i>Celastrus orbiculatus</i>	42.93821 -73.88245	Vine	Vegetative	Sparse
Gypsy Moth	<i>Lymantria dispar</i>	42.93933 -73.87505	Pest	Moth	Single individual with eggs
Black Locust	<i>Robinia pseudoacacia</i>	42.93844 -73.87973	Tree	Vegetative	Dense

Capital Mohawk PRISM Strongly Recommends Uploading Points into <https://www.imapinvasives.org/>

Native Community Types: Wetland and forest

Dominant Native Plants Present: Sugar Maple, black cherry, and hemlock

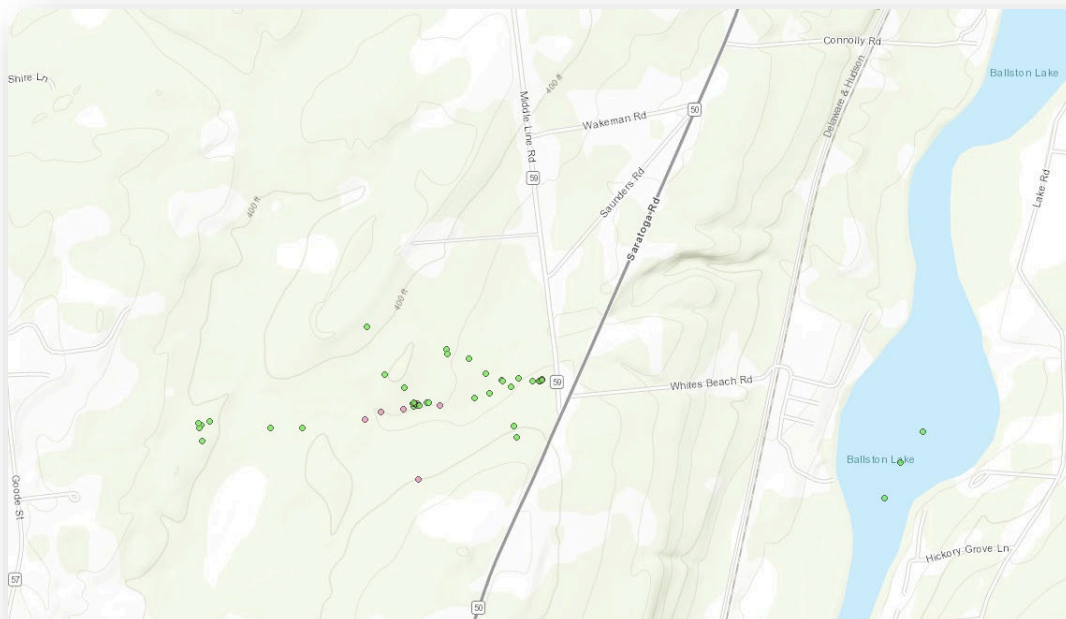
Summary of Work Completed:

1. Surveying for terrestrial invasive plant species
2. Scoping out the area for possible training sessions

Recommendations for the Future: Continue surveying the site

Contact the Capital Mohawk Prism <http://www.capitalmohawkprism.org/>

Figure 1. Map of points taken in Anchor Diamond Park in Saratoga County.





Capital Mohawk PRISM
Partnership for Regional
Invasive Species Management

Cornell Cooperative Extension | Saratoga

50 West High St.
Ballston Spa, NY 12020
(518) 885-8995

Figure 2. Japanese Barberry in Anchor Diamond Park in Saratoga County.



The New York State Department of Environmental Conservation provides financial support to The Capital Mohawk PRISM via the Environmental Protection Fund.



Department of
Environmental
Conservation