



# CAPITAL DISTRICT WMA / CHERRY PLAIN STATE PARK

## INVASIVE SPECIES SURVEY 2019:

Anna Kuhne, Lauren Mercier, and Kelsey Stevens

**Type of Work Performed:** Survey for terrestrial invasive plant species

**Date:** August 14<sup>th</sup>, 2019

**Address:** 2 State Park Rd, Petersburg, NY 12138

**County:** Rensselaer County

**Latitude and Longitude:** 42.622568, -73.405230

**Website:** <https://www.dec.ny.gov/outdoor/86016.html>

**Lead Contact Information for Project:** Lauren Mercier

**Site Owner Contact Information:** DEC Region 4 Schenectady Office (518) 357 – 2158 [Wildlife.r4@dec.ny.gov](mailto:Wildlife.r4@dec.ny.gov)

**Project Description:** Walked along access roads, parking lots, and trails to find terrestrial invasive species. A majority of the surveys were done along the access roads and their parking lots.

***Invasive Species Present at Capital District WMA and Cherry Plain State Park:***

Common Name	Scientific Name	Locations (GPS)	Growth Type	Phenology	Distribution/ Abundance
Colt's Foot	<i>Tussilago farfara</i>	42.64198 -73.40817	Herbaceous	Vegetative	Dense
Tufted Vetch	<i>Vicia cracca</i>	42.64426 -73.40903	Herbaceous	In flower	Record from 2018
Garlic Mustard	<i>Alliaria petiolate</i>	42.6007 -73.41362	Herbaceous	In seed	scattered patches
Mugwort	<i>Artemisia vulgaris</i>	42.63687 -73.40538	Herbaceous	Vegetative	Dense
Japanese Barberry	<i>Berberis thunbergii</i>	42.619 -73.4113	Shrub	Vegetative	Scattered
Hairy Bitter – Cress	<i>Cardamine hirsute</i>	42.635 -73.39278	Herbaceous	Record from 2017	Record from 2017
Narrowleaf Bittercress	<i>Cardamine impatiens</i>	42.64061 -73.40814	Herbaceous	Vegetative	Record from 2018
Spotted Starthistle	<i>Centaurea stoebe</i>	42.62517 -73.41206	Herbaceous	In flower	Dense
Canada Thistle	<i>Cirsium arvense</i>	42.62768 -73.4097	Herbaceous	Vegetative	Record rom 2018
Poison Hemlock	<i>Conium maculatum</i>	42.6284 -73.40976	Herbaceous	In flower	Record from 2018



<b>Crown Vetch</b>	<i>Coronilla varia</i>	42.63984 -73.40796	Herbaceous	Vegetative	Record from 2018	
<b>Burning Bush</b>	<i>Euonymus alatus</i>	42.64563 -73.40972	Shrub	Record from 2018	Record from 2018	
<b>Morrow Honeysuckle</b>	<i>Lonicera morrowii</i>	42.63032 -73.41166	Shrub	Vegetative	Record from 2018	
<b>Honeysuckle</b>	<i>Lonicera spp</i>	42.62101 -73.41024	Shrub	Record from 2017	Record from 2017	
<b>Creeping Jenny</b>	<i>Lysimachia nummularia</i>	42.62466 -73.40926	Herbaceous	Vegetative	Record from 2018	
<b>Purple Loosestrife</b>	<i>Lythrum salicaria</i>	42.61781 -73.41211	Herbaceous	Record from 2017	Record from 2017	
<b>Wild Parsnip</b>	<i>Pastinaca sativa</i>	42.6267 -73.40998	Herbaceous	In flower	Record from July 2018	
<b>Common Reed</b>	<i>Phragmites australis</i>	42.63852 -73.40341	Herbaceous	Vegetative	Dense	
<b>Multiflora Rose</b>	<i>Rosa multiflora</i>	42.62267 -73.42946	Shrub	Vegetative	Scattered	
<b>Climbing Nightshade</b>	<i>Solanum sulcamara</i>	42.63578 -73.40694	Vine	Vegetative	Record from 2018	
<b>Chicory</b>	<i>Cichorium intybus</i>	42.62515 -73.41216	Herbaceous	In flower	Dense (parking lots)	
<b>Bull Thistle</b>	<i>Cirsium vulgare</i>	42.63594 -73.39323	Herbaceous	In flower	Dense	
<b>Wild Carrot</b>	<i>Daucus carota</i>	42.64059 -73.39409	Herbaceous	In flower	Dense	
<b>Common St. Johnswort</b>	<i>Hypericum perforatum</i>	42.64062 -73.3941	Herbaceous	In flower	Sparse	
<b>Birdfoot Deervetch</b>	<i>Lotus corniculatus</i>	42.62517 -73.41211	Herbaceous	In Flower	Scattered	
<b>Reed Canarygrass</b>	<i>Phalaris arundinacea</i>	42.60076 -73.41362	Herbaceous	In Seed	Single plant	
<b>Great Mullein</b>	<i>Verbascum Thapsus</i>	42.64054 -73.39402	Herbaceous	In flower	Dense (mostly parking lots)	
<b>Common Periwinkle</b>		42.60411 -73.40883	42.60411 -73.40883	Herbaceous	Vegetative	Sparse plant clumps

Capital Mohawk PRISM Strongly Recommends Uploading Points into <https://www.imapinvasives.org/>

**Native Community Types:** Wetland, meadow, and forested

**Dominant Native Plants Present:** Hemlock, oaks, sugar maples, and swamp milkweed

**Summary of Work Completed:**

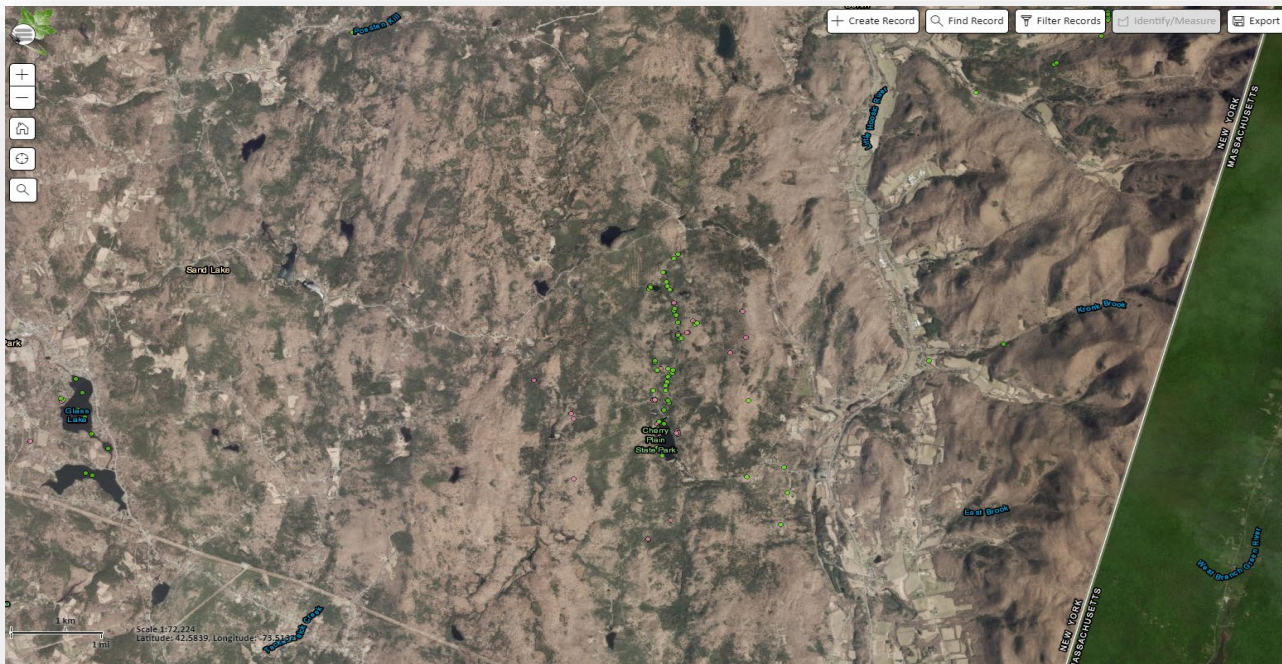


1. Survey for terrestrial invasive plant species

**Recommendations for the Future:** continue to survey for and document terrestrial invasive plant species

Contact the Capital Mohawk Prism <http://www.capitalmohawkprism.org/>

**Figure 1. Map of points taken at Cherry Plain State Forest and Capital District Wildlife Management Area in Rensselaer County, NY.**



**Figure 2. Mugwort in Capital District Wildlife Management Area.**



**Figure 3. Chicory in Cherry Plain State Park.**



The New York State Department of Environmental Conservation provides financial support to The Capital Mohawk PRISM via the Environmental Protection Fund.



**Department of  
Environmental  
Conservation**