



## Capital Region PRISM Hemlock Woolly Adelgid Lake Survey Report(s)

Date: June 2<sup>nd</sup> to the 16<sup>th</sup> 2020

### Site Name(s):

- Butler Pond Impoundment Warren County NY 43.35031 °-73.72773 °  
Van Dusen Preserve West Mountain Rd Queensbury, NY 12804  
<https://www.queensbury.net/2015/11/rush-pond-trail/>
- Butler Pond Reservoir Warren County NY 43.37139 ° -73.7357 °
- Moreau Lake State Park Saratoga County NY 43.23574 °-73.71116 °  
<https://www.dec.ny.gov/outdoor/84524.html>
- Lake Bonita Moreau Lake State Park 43.20739° -73.76606°  
<https://parks.ny.gov/parks/attachments/MoreauLakeMoreauLakeStateParkLakeBonitaTrailMap.pdf>
- Big Ben Preserve (TBA) Moreau Lake State Park Saratoga County NY 43.27677 °-73.6977°
- Hudson River Corridor Sherman Island Boat Launch Saratoga County NY 43.24709 °-73.7474°
- Lake Desolation Saratoga County NY 43.13805° -73.97105°
- Archer Fly Saratoga County 43.1575 °-73.96273 °  
<https://www.dec.ny.gov/lands/107155.html>
- Rockwood Lake State Forest Fulton County NY 43.0659, -74.5074  
<https://www.dec.ny.gov/lands/107041.html>
- Peck Lake Fulton County NY Latitude: 43.12676 ° -74.39809 °

Butler Pond Area. Access should be coordinated with our Water Filtration Plant Senior Operator Rick Smith 518-761-3850 Extension 140.

Steve Gurzler, PE Water & Sewer Superintendent City Engineer City of Glens Falls, 2 Shermantown Road Glens Falls, NY 12801 518-761-3850 X 126  
[engineer@cityofglensfalls.com](mailto:engineer@cityofglensfalls.com)

Survey Leader(s): Kristopher Williams CRP Team Leader; Nicole Campbell CRP TIS Coordinator

Phone: 518.321.0189

Email: [kbw44@cornell.edu](mailto:kbw44@cornell.edu)

iMapInvasives User ID:9274

**Point of Contact:** Caroline (Carri) Marschner [cam369@cornell.edu](mailto:cam369@cornell.edu) 360-915-4778  
NYS Hemlock Initiative, Cornell University

### Summary

The Capital Region PRISM in supporting The Cornell Hemlock Initiative has conducted several lake surveys for Hemlock Woolly Adelgid (HWA). The lead contact for the HWA Lake Survey program is Carri Marschner from the Cornell Hemlock Initiative. The Hemlock Initiative has designed a program to survey for HWA surrounding the southern portion of the Adirondack Blue Line in upstate New York. This program is in its 2<sup>nd</sup> year and is seeking to slow the spread of HWA with early identification

- <https://blogs.cornell.edu/nyshemlockinitiative/>

### **Future sites for consideration.**

- St. Johnsville Reservoir Fulton County
- Black Creek Reservoir Fulton County
- Hinckley Reservoir Herkimer County
- Spruce Lake Herkimer County

### **Sites to be removed due to lakeside urbanization and low to no hemlock density.**

- Glen Lake Warren County
- Galway Lake Saratoga County
- Nancy Lake Saratoga County

### **Removed because a lack of Hemlock Trees**

- South Bay Washington County



## Survey Techniques:

- [Hemlock Initiative Boat Survey Protocol](#)

## iMapInvasives Prioritization Model:

The searched areas are ranked moderately to high on the prioritization model comprehensive score attribute. (Fairly dense shaded coloring on the heat map.) The areas with low comprehensive values are surrounded by ecologically important areas. All the areas surveyed have moderate to high composition of Hemlock Trees in the forest matrix.

- <https://www.arcgis.com/home/webmap/viewer.html?webmap=57d30ff9bff7426c8950d90b0ba43bba&extent=-81.0352,39.2503,-70.2686,45.8067>

Does this site contain previously treated infestations? YES  
HWA Treatment Prospect Mountain Lake George.

- Two sites are within 10 miles of the treatment area. Butler Pond and Moreau Lake State Park.

## Invasive Species Survey Results: **NO Detection**

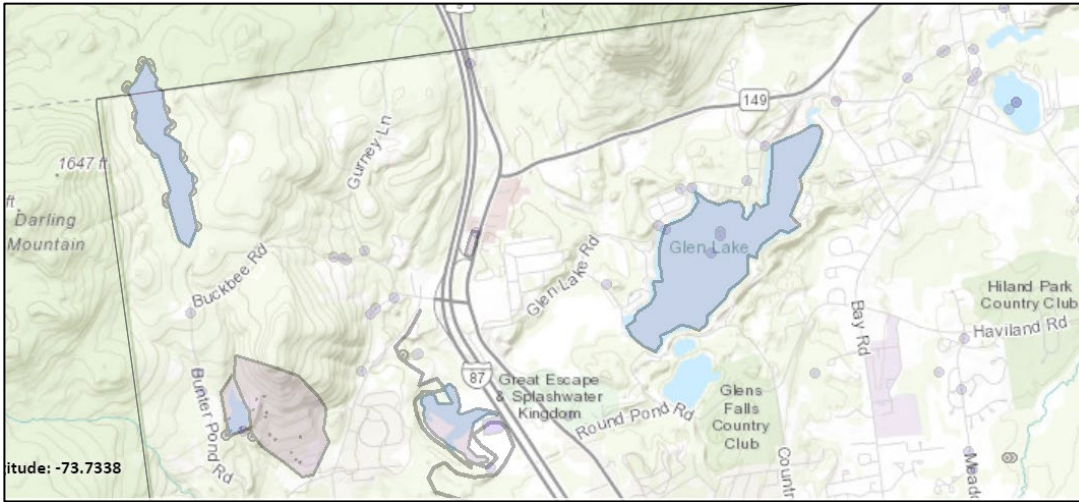
Common Name	Scientific Name	Locations (GPS)	Survey Type	Status	Time/Survey
Hemlock Woolly Adelgid (HWA)	<i>Adelges tsugae</i>	43.350688, -73.725802 VanDusen Preserve	Shore Line Survey Terrestrial	No Detection	60 min
Hemlock Woolly Adelgid (HWA)	<i>Adelges tsugae</i>	43.35031 °-73.72773 ° Butler Pond Impound	Shore Line Survey Terrestrial	No Detection	60 min
Hemlock Woolly Adelgid (HWA)	<i>Adelges tsugae</i>	43.37139 ° -73.7357 ° Butler Pond Reservoir	HWA Lake Survey	No Detection	120 min
Hemlock Woolly Adelgid (HWA)	<i>Adelges tsugae</i>	43.23574 °-73.71116 ° Moreau SP	HWA Lake Survey	No Detection	120 min
Hemlock Woolly Adelgid (HWA)	<i>Adelges tsugae</i>	43.20739° -73.76606° Lake Bonita Moreau	HWA Lake Survey	No Detection	100 min
Hemlock Woolly Adelgid (HWA)	<i>Adelges tsugae</i>	43.27677 °-73.6977° Big Ben Preserve MLSP	HWA Lake Survey	No Detection	180 min
Hemlock Woolly Adelgid (HWA)	<i>Adelges tsugae</i>	43.24709 °-73.7474° Hudson River	HWA Lake Survey	No Detection	240 min
Hemlock Woolly Adelgid (HWA)	<i>Adelges tsugae</i>	43.13805° -73.97105° Lake Desolation	HWA Lake Survey	No Detection	120 Min
Hemlock Woolly Adelgid (HWA)	<i>Adelges tsugae</i>	43.1575 °-73.96273 ° Archer Fly	HWA Lake Survey	No Detection	60 Min
Hemlock Woolly Adelgid (HWA)	<i>Adelges tsugae</i>	43.0659, -74.5074 Rockwood Lake	HWA Lake Survey	No Detection	120 Min*
Hemlock Woolly Adelgid (HWA)	<i>Adelges tsugae</i>	43.12676 ° -74.39809 ° Peck Lake	HWA Lake Survey	No Detection	180? Min



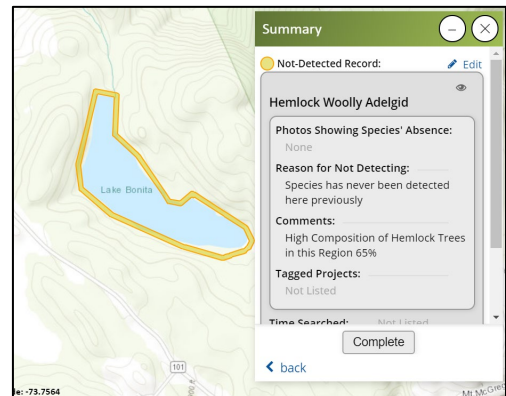
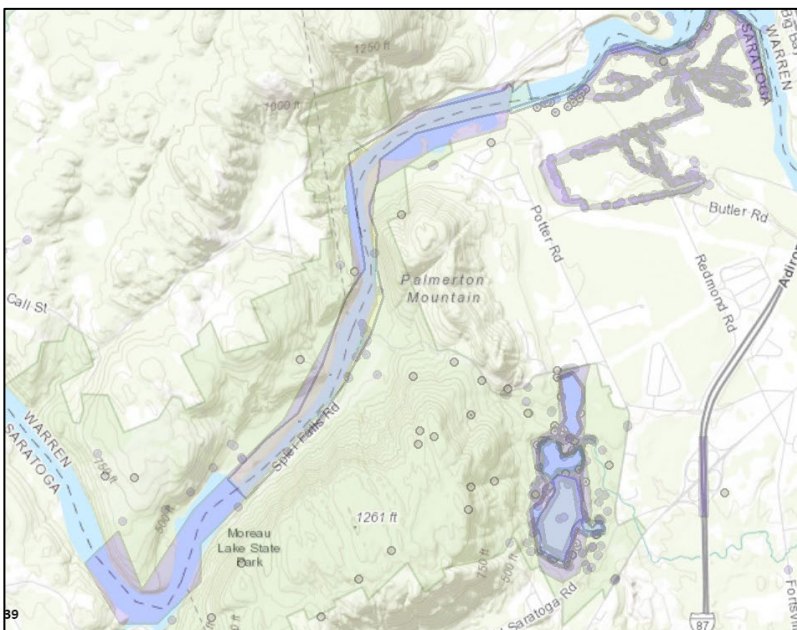
**Map:**

Develop a map of the survey area that has any iMapInvasives points and searched polygons included to clearly define infestation extent. Multiple maps may be added for multiple species or locations.

Butler Pond Impoundment Warren County NY 43.35031 °-73.72773 °  
Van Dusen Preserve West Mountain Rd Queensbury, NY 12804  
Butter Pond Reservoir 43.37139 ° -73.7357 °  
Search Area Record #1065556 Not-Detected Region #11629



Moreau Lake State Park Saratoga County NY 43.23574 °-73.71116 °  
Lake Bonita Moreau Lake State Park 43.20739° -73.76606°  
Big Ben Preserve / Moreau Lake State Park Saratoga County NY 43.27677 °-73.6977°  
Searched Area Record #1067732\* Not-Detected Record: #11766  
Hudson River Corridor Sherman Island Boat Launch Saratoga County NY 43.24709 °-73.7474°  
Search Area Record #1065563

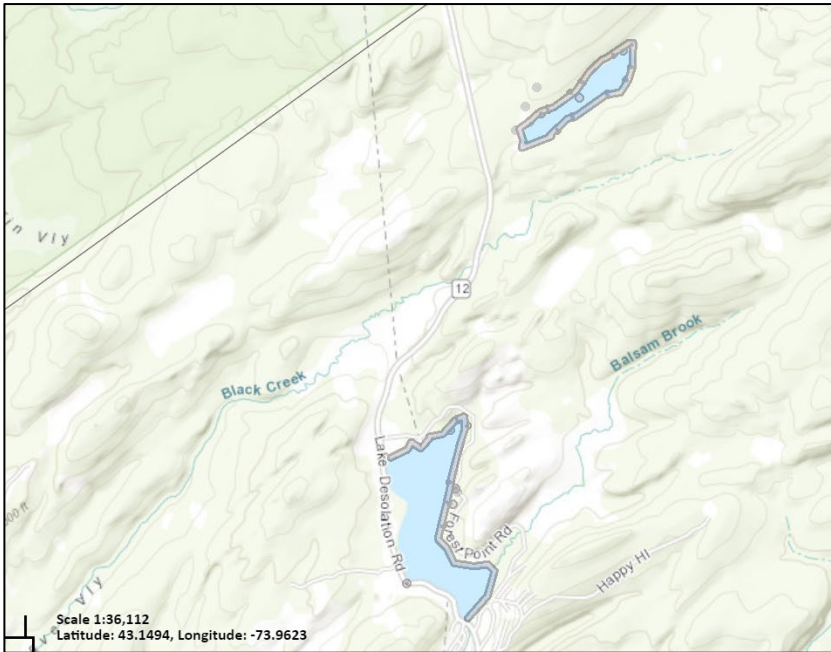




Lake Desolation Saratoga County NY 43.13805° -73.97105°

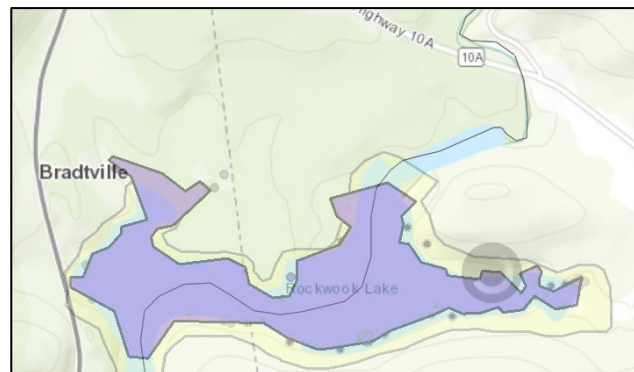
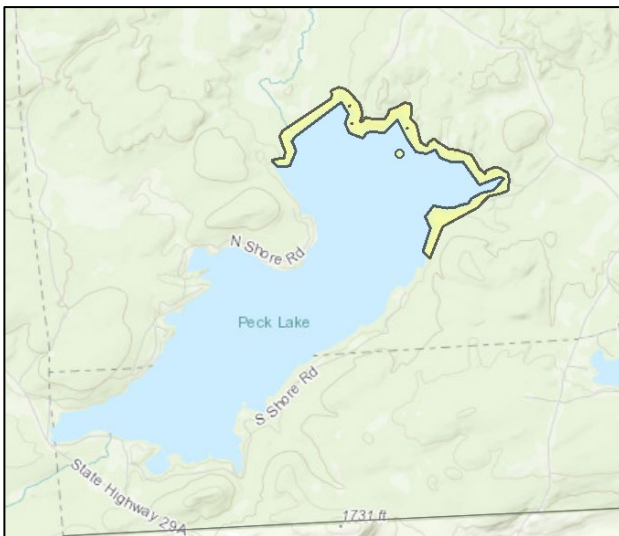
Archer Fly Saratoga County NY 43.1575° -73.96273°

AreaRecord#[1067721](#)\* Not-Detected Region #117585



Rockwood Lake State Forest Fulton County NY 43.0659, -74.5074

Peck Lake Fulton County NY Latitude: 43.12676° -74.39809°





## **Section 2: Survey Result Summary**

No Detections

## **Section 3: Summary of Recommendations**

This page provides recommendations of any treatment methods, monitoring methods, and restoration efforts based on the survey.

**Treatment:** *Describe briefly any recommendations for future treatment methods, why they are recommended, and any alternatives to consider. Please use abundance and site-specific factors in your treatment recommendation. Optional: Attach or reference BMP guidance document*

None at this time

- Continue to monitor and develop sites for the future as posted on the front of the report.
- Survey ecologically important areas connected to the waterbodies with significant Hemlock densities at the appropriate times.

Basic Fact Sheet

- [http://nyis.info/invasive\\_species/hemlock-woolly-adelgid/](http://nyis.info/invasive_species/hemlock-woolly-adelgid/)

**Post-Survey Monitoring:** *Briefly explain the monitoring procedure, when it will occur, and who will complete it. Consider the phenology of species when suggesting time-lines. If a separate management or monitoring plan was developed or to be completed, attach or describe here.*