



## Capital Region PRISM AIS Treatment Report

Date(s): 8-20-20, 9-2-20, 9-11-20

Site Name: Delegan Pond - Wilton Wildlife Preserve

Site Size: 4.1 acre(s)

Waterbody Perimeter: 0.4 Miles

Mean Depth: --

GPS Location: 43.154193, -73.698806

Physical Address: 80 Scout Road, Parking Lot 1

Town: Gansevoort, NY

County: Saratoga

### Property Owner Contact:

Wilton Wildlife Preserve & Park

80 Scout Road, Gansevoort, NY 12831

Primary Contact: Margo Bloom Olson [mbolson@wiltonpreserve.org](mailto:mbolson@wiltonpreserve.org)

Secondary Contact: Erin McCabe [emccabe@wiltonpreserve.org](mailto:emccabe@wiltonpreserve.org)

Survey Leader: Kristopher Williams - PRISM Coordinator

Phone: 518.321.0189 / Email: [kbw44@cornell.edu](mailto:kbw44@cornell.edu)

iMapInvasives User ID: 9274



### Summary

On August 20th and September 2nd and 11th the Capital Region PRISM conducted a Water chestnut (*Trapa natans*) removal from Delegan Pond at the Wilton Wildlife Preserve and Park. The pond is approximately 4 acres in size and very manageable. Water chestnut was identified in the water body in 2019. The current infestation has a few small patches that are forming into dense monocultures with trace to sparse populations throughout the pond. The 4 acre removal took a four person crew 16 hours to remove 39 bags of water chestnut weighing in at approximately 3000 pounds. Material was bagged and sent to a sanitary landfill.

### Aquatic Invasive Species Presence of Concern – Water chestnut

- Very high threat species
- New York Non-Native Plant Invasiveness Ranking - 82
  - [http://nyis.info/wp-content/uploads/2018/01/61a2d\\_Trapa-natans-NYS.pdf](http://nyis.info/wp-content/uploads/2018/01/61a2d_Trapa-natans-NYS.pdf)
- General Species Information: [http://nyis.info/invasive\\_species/water-chestnut/](http://nyis.info/invasive_species/water-chestnut/)

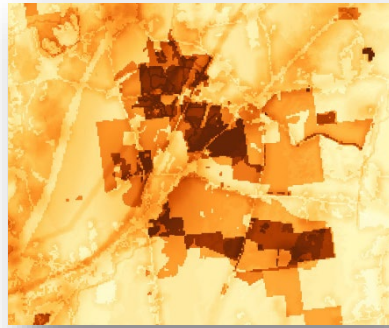
### Site Description

Delegan pond is a small four acre pond in an ecologically sensitive area. The Wilton Wildlife Preserve and Park uses the pond for outdoor educational purposes. The Town of Wilton Town Board, owners of property known as Camp Saratoga has stocked Scout Pond for resident fishing. The stocking program is for the Town of Wilton's handicapped and youths under 16 only. The pond serves as a cultural/social component for area residents.



## MapInvasives Prioritization Model

<https://www.arcgis.com/home/webmap/viewer.html?webmap=57d30ff9bff7426c8950d90b0ba43bba&extent=-81.0352,39.2503,-70.2686,45.8067>



The area surrounding Delegan Pond is ranked high on the prioritization model comprehensive score attribute with a strong coloring on the heat map due in part to the Karner Blue butterfly habitat. The pond is ranked moderately on the model.

## Does this site contain previously treated infestations?

- No

## Survey Techniques

- Visual Inspection of Surface and Subsurface

## Map





## Section 2: Treatment Species

Common Name	Scientific Name	Location (GPS)	Growth Type	Phenology	Abundance
Water Chestnut	Trapa natans	Note Seven Polygons	Surface/Rooted	In seed	Dense plants/ Monoculture(s)

### Areas of Concern

The presence polygons in green are locations where dense abundance of Water Chestnut (*Trapa natans*) were removed.

(Polygon data was delineated using ARC GIS Collector in the field)



#### Polygon 1 (purple)

*iMap Invasives Searched Area Record ID: 18941*

*iMap Invasives Treatment Record ID: 18941*

*Location: 43.15265, -73.69989*

*Area: (4.0 Acres)*

#### Polygon 2 (green)

*iMap Invasives Presence Record ID:*

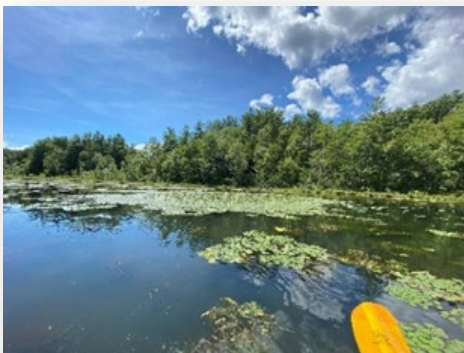
*Location: 43.152243, -73.700059*

*Area: 4251 sq. ft. (0.1 Acre)*

### Removal

4 person crew - 16 hours – 39 garbage bags

- Estimated ~3000 pounds of water chestnut removed
  - August 20<sup>th</sup> - 7 bags / ~75 lbs. / 4 person crew 6 hours / Searched Area
  - Sept 2<sup>nd</sup> - 24 bags / ~75 lbs. / 4 person crew 6 hours / Polygon 2
  - Sept 11<sup>th</sup> - 8 bags / ~75 lbs. / 2 person crew 4 hours / Polygon 2



Before monoculture removal - 8.20.20



After monoculture removal - 9.11.20



## Section 3: Summary of Recommendations

### Treatment

#### Hand Harvesting:

- Newly introduced populations of *T. natans*, early detection of introductions and a rapid control response are key to preventing high-impact infestations. Because *T. natans* is an annual plant, effective control can be achieved if seed formation is prevented. Small populations can be controlled by hand pulls working from canoes or kayaks. Delegan Pond was cleared out with a small crew of 6 people (2-4 per day) over the course of three days. Staff from the Wilton Wildlife Preserve and Capital Region PRISM partnered on the event.
- Water chestnut overwinters entirely by seeds that may remain viable in the sediment for up to 12 years, repeated annual control is critical to deplete the seed bank. Treatment generally is needed for five to twelve years. A calendar for treatment should be adhered to for successful removal. The best time for coordinating a pull is in August.
- The Capital Region PRISM recommends collaborating with the Wilton Wildlife Preserve to recruit volunteers for future removals.
- Disposal of material would be best if allowed to decompose on site and then buried on preserve property.

#### Basic Primer(s) on Water Chestnut

- [https://www.dec.ny.gov/docs/lands\\_forests\\_pdf/aiswatercfs.pdf](https://www.dec.ny.gov/docs/lands_forests_pdf/aiswatercfs.pdf)
- [http://nyis.info/invasive\\_species/water-chestnut/](http://nyis.info/invasive_species/water-chestnut/)
- <https://seagrant.sunysb.edu/ais/pdfs/WaterChestnutFactsheet.pdf>

### Post- Survey Monitoring:

The Capital Region PRISM will continue to monitor the infestation(s) of Water Chestnut (*Trapa natans*) on a triannual cycle and delineate their size using ARC GIS Collector. The PRISM will also monitor for other AIS.

*Will post-treatment management be handled by another person/entity?*

- Yes, Wilton Wildlife Preserve and Capital Region PRISM.

*Will an Invasive Species Management Plan be created?*

- Yes, see associated document.

### Photos

