



HANNACROIX PARK PRESERVE INVASIVE SPECIES SURVEY

2019:

Anna Kuhne, Lauren Mercier, and Kelsey Stevens

Introduction: In July of 2019, the Terrestrial Invasive Species interns, from Siena College, and the education and outreach coordinator went to look for early detection invasive species throughout the Capital-Mohawk PRISM. The Siena interns, Anna Kuhne and Kelsey Stevens, focused on terrestrial invasive plant surveys at highly susceptible and valuable habitats throughout the PRISM region. The following is an abridged summary of some of the findings of the survey throughout the Hannacroix Park Preserve. The PRISM works throughout 11 counties around the capital region to detect, prevent, and control invasive species.

Project Description: Surveying terrestrial invasive plants in the park

Dates: July 3rd, 2019

Participants: Capital Mohawk Prism, Cornell Cooperative Extension, NYS DEC, and the New Baltimore Conservancy

Point of Contact: The New Baltimore Conservancy: newbaltconservancy@gmail.com

County: Greene County, New York

Locations and Species Identified:

Hannacroix Park Preserve (The New Baltimore Conservancy): Scouting was done on the trails of the Hannacroix Park Preserve, including the parking lot, Laverne Irving Trail, Red Loop Trail, North Trail, Laverne Irving Spur Blue Trail, Paper Mill Trail, and the Hudson River Interpretive Trail.

Invasive Species Present at Hannacroix Park Preserve:

Common Name	Scientific Name	Locations (GPS)	Growth Type	Phenology
Common Reed	<i>Phragmites australis</i>	42.46102 -73.78951	Herbaceous	Vegetative
Tree of Heaven	<i>Ailanthus altissima</i>	42.46219 -73.79217	Tree	Vegetative
Japanese Barberry	<i>Berberis thunbergii</i>	42.46296 -73.79631	Shrub	Vegetative
Oriental Bittersweet	<i>Celastrus orbiculatus</i>	42.4614 -73.79503	Vine	Vegetative
Mugwort	<i>Artemisia vulgaris</i>	42.46221 -73.79237	Herbaceous	Vegetative
Honeysuckle	<i>Lonicera spp.</i>	42.46258	Shrub	Vegetative

The New York State Department of Environmental Conservation provides financial support to The Capital Mohawk PRISM via the Environmental Protection Fund.



		-73.79408		
Burning Bush	<i>Euonymus alatus</i>	42.46319 -73.79729	Shrub	Vegetative
Multiflora Rose	<i>Rosa multiflora</i>	42.46153 -73.79003	Shrub	Past Seed
Elongate Hemlock Scale	<i>Fioinia externa</i>	42.46342 -73.79786	Pest	N/A
Purple Loosestrife	<i>Lythrum salicaria</i>	42.46157 -73.79027	Herbaceous	
Common Buckthorn	<i>Rhamnus cathartica</i>	42.46319 -73.79684	Tree	Vegetative
Norway Maple	<i>Acer platanoides</i>	42.46388 -73.79182	Tree	In Seed (Samaras)
Narrow Leaf Bittercress	<i>Cardamine impatiens</i>	42.46221 -73.79942	Herbaceous	In Seed
Dame's Rocket	<i>Hesperis matronalis</i>	42.46109 -73.78985	Herbaceous	In Flower
Privet	<i>Ligustrum spp.</i>	42.46287 -73.7952	Shrub	Vegetative
Creeping Jenny; Moneywort	<i>Lysimachia nummularia</i>	42.46236 -73.79683	Herbaceous	Vegetative
Japanese Stiltgrass	<i>Microstegium vimineum</i>	42.45909 -73.80061	Herbaceous	Vegetative
Black Locust	<i>Robinia pseudoacacia</i>	42.46001 -73.78755	Tree	Vegetative
Colts Foot	<i>Tussilago farfara</i>	42.46224 -73.79988	Vine	Vegetative
Common Periwinkle	<i>Vinca minor</i>	42.4616 -73.80015	Herbaceous	Vegetative
Garlic Mustard	<i>Alliaria petiolate</i>	42.46222 -73.79225	Herbaceous	Vegetative

Dominant Native Plants: Virginia creeper, sugar maple, cotton wood, quaking aspen

Native Community Types: Forested, creek-side

Treatment Method: N/A

Summary of Work Completed:

1. Scouting for invasive terrestrial plant species

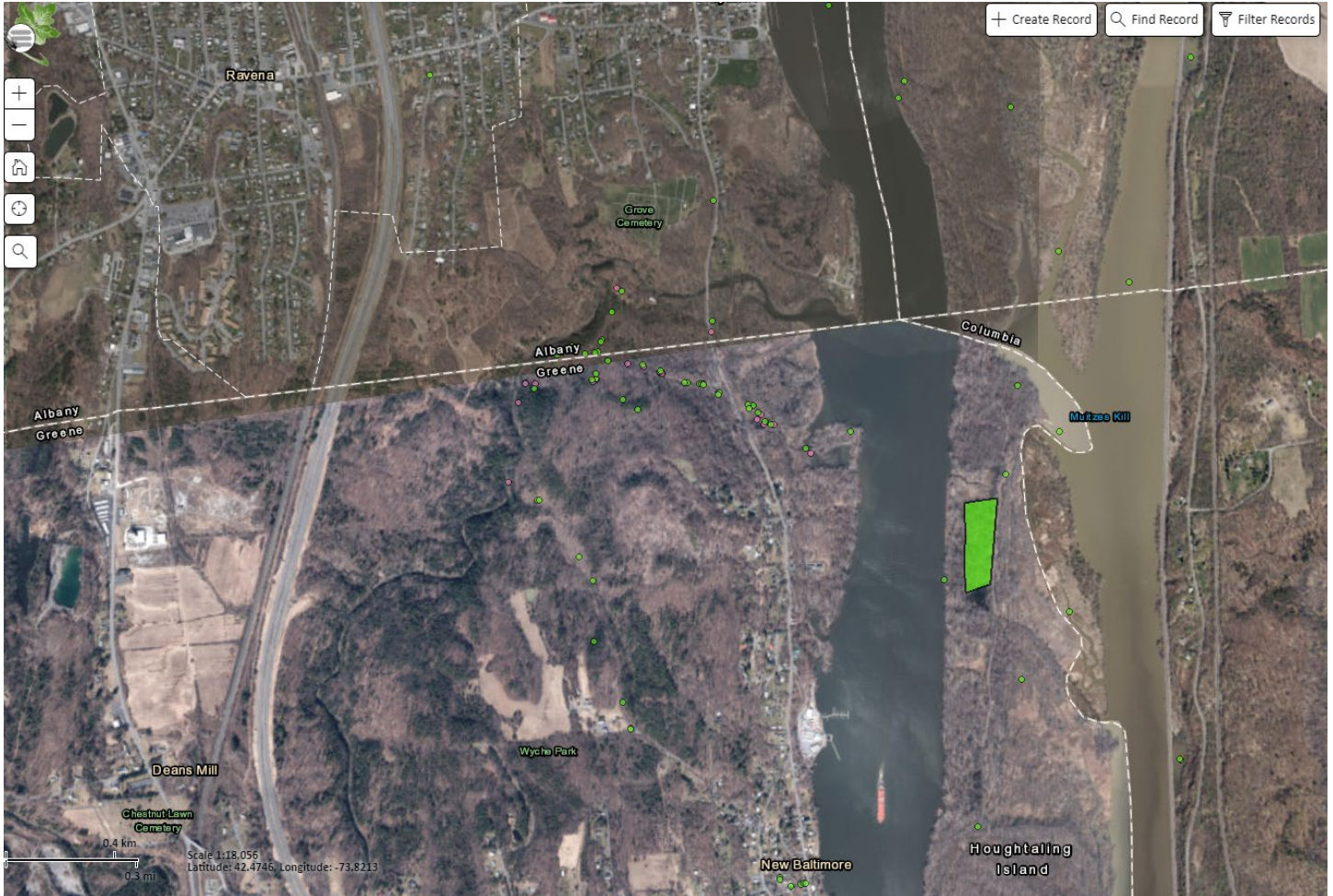
Recommendations for the Future: Continue scouting

The New York State Department of Environmental Conservation provides financial support to The Capital Mohawk PRISM via the Environmental Protection Fund.



Contact Anna Kuhne at ay13kuhn@siena.edu, Lauren Mercier at lnm47@cornell.edu, or Kelsey Stevens at kao04stev@siena.edu for any questions regarding this report.

Figure 1: Map of the points taken at the Hannacroix Park Preserve in Greene County.



The New York State Department of Environmental Conservation provides financial support to The Capital Mohawk PRISM via the Environmental Protection Fund.



Figure 2: Japanese Barberry (*Berberis thunbergii*) at Hannacroix Park Preserve on the North Trail.



The New York State Department of Environmental Conservation provides financial support to The Capital Mohawk PRISM via the Environmental Protection Fund.



Figure 3: Honeysuckle (*Lonicera spp*) at Hannacroix Park Preserve on the Laverne Irving Trail.



The New York State Department of Environmental Conservation provides financial support to The Capital Mohawk PRISM via the Environmental Protection Fund.



Figure 4: Common periwinkle (*Vinca minor*) at the Hannacroix Park Preserve on the Laverne Irving Trail closer inbetween theLaverne Irving Spur Blue Trail and the Paper Mill trail.



The New York State Department of Environmental Conservation provides financial support to The Capital Mohawk PRISM via the Environmental Protection Fund.