



## HUYCK PRESERVE INVASIVE SPECIES SURVEY 2019:

Emily Caboot, Anna Kuhne, Lauren Mercier, and Kelsey Stevent

**Type of Work Performed:** Manual removal of false spiraea, and burning bush at the Huyck Preserve

**Date:** August 6<sup>th</sup> and 9<sup>th</sup>, 2019

**Address:** E.N. Huyck Preserve, 5052 Delaware Turnpike, Rensselaerville, NY 12147

**County:** Albany County

**Latitude and Longitude:** 42.515448, -74.140219

**Website:** <https://www.huyckpreserve.org/>

**Lead Contact Information for Project:** Anne Rhoads 518-813-5583 Anne@huyckpreserve.org

**Site Owner Contact Information:** Anne Rhoads 518-813-5583 Anne@huyckpreserve.org

**Project Description:** Continued, work that had previously been started that week by the Huyck Preserve team, to manually remove false spiraea for eradication. The patch was about 800 plants in total, that day we removed over 50. Later in the week a single burning bush was manually removed on site.

### ***Invasive Species Present at Huyck Preserve:***

Common Name	Scientific Name	Locations (GPS)	Growth Type	Phenology	Distribution/ Abundance
False Spiraea	<i>Sorbaria sorbifolia</i>	42.54297 -74.16654	Herbaceous	Vegetative	Monoculture
Burning Bush	<i>Euonymus alatus</i>	42.51837 -74.14406	Shrub	In seed	Single plant surrounded by seedlings

Capital Mohawk PRISM Strongly Recommends Uploading Points into <https://www.imapinvasives.org/>

**Native Community Types:** Forest

**Dominant Native Plants Present:** Jack in the pulpit, sugar maples

### **Summary of Work Completed:**

1. Continuation of digging up the false spiraea to eventually eradicate the patch

**Recommendations for the Future:** Continue removal until the patch has been eradicated. In the future return for surveys to look for any new sprouts.

Contact the Capital Mohawk Prism <http://www.capitalmohawkprism.org/>



**Figure 1. Map of points taken at the location. The false spiraea is the pink dot on the map.**

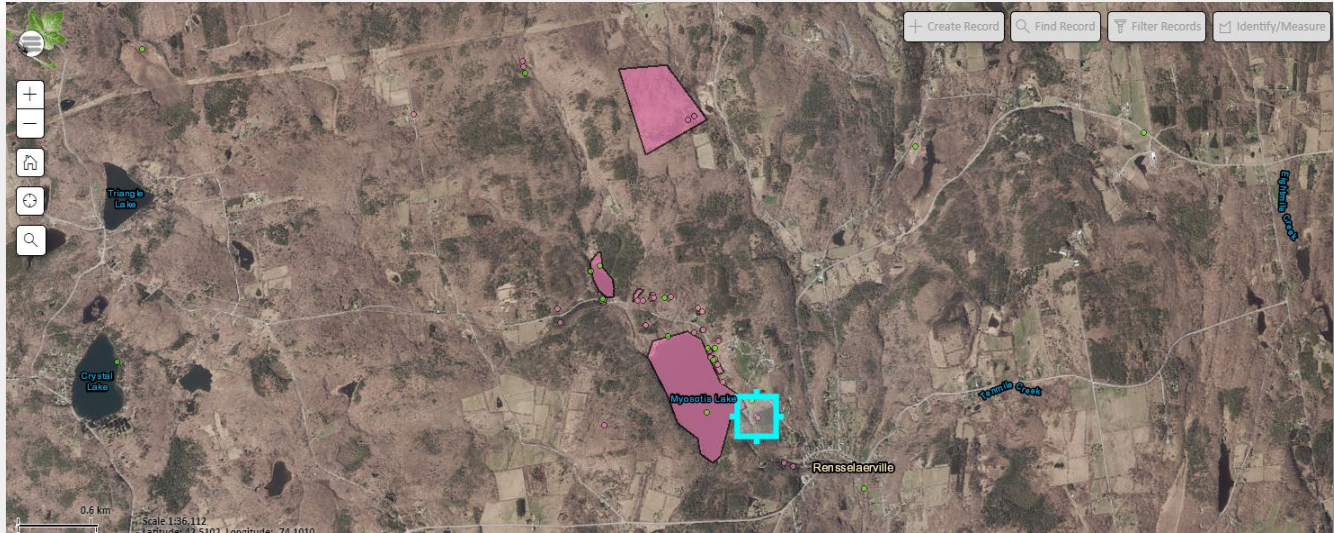


**Figure 2. False spiraea at the Huyck Preserve**





**Figure 3. Map of points taken at the Huyck Preserve. The two pink points in the box are for the single burning bush that was manually removed.**



**Figure 4. The burning bush that was manually removed.**

