



Capital Mohawk PRISM
 Cornell Cooperative Extension: Saratoga
 50 West High St.
 Ballston Spa, NY 12020

HWA Survey

Date: June 4th, 2019

Survey Team: Kristopher Williams and Lauren Mercier

Project Description: As a part of supporting the Cornell Hemlock Initiative, Capital-Mohawk PRISM surveyed Butler Pond Reservoir, near Lake George, NY. This survey is a part of the HWA Lake Survey Program that Carrie Marchner from the initiative that has coordinated with several other agencies.

- <https://blogs.cornell.edu/nyshemlockinitiative/>
- [Hemlock Initiative Boat Survey Protocol](#)

Location:

Van Dusen Preserve
 West Mountain Rd
 Queensbury, NY 12804
 (518) 418-5263

Point of Contact:

Caroline (Carri) Marschner
 NYS Hemlock Initiative Cornell University
cam369@cornell.edu
 360-915-4778

Introduction: The Hemlock Initiative has designed a program to survey for HWA surrounding the southern portion of the Adirondack Blue Line in upstate New York. The program is in its pilot year and is seeking to slow the spread of HWA with early identification. The Capital Mohawk PRISM conducted this survey at Butler Pond Reservoir on the Van Dusen Preserve, in Queensbury, NY. This pond is in close proximity to Prospect Mountain where HWA was found in 2017. Butler pond itself was inaccessible and requires permission to access the paths through the City of Glens Falls Water & Sewer Department.

Invasive Species Survey: Butler Pond Reservoir

Common Name	Scientific Name	Locations (GPS)	Survey Type	Status	Time/Survey
Hemlock Woolly Adelgid (HWA)	Adelges tsugae	43.350688, -73.725802	Early Detection HWA Boat Survey	No Detection No Damage	240 min

The New York State Department of Environmental Conservation provides financial support to The Capital Mohawk PRISM via the Environmental Protection Fund.

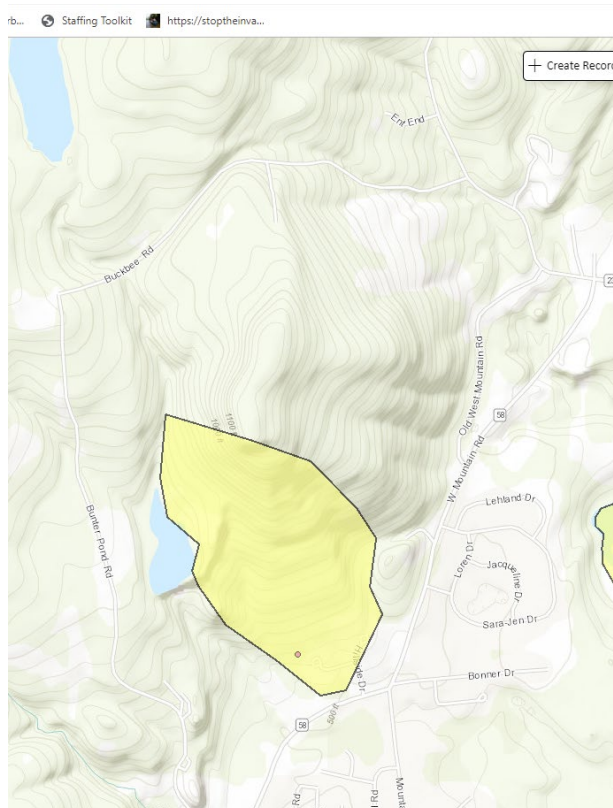


Capital Mohawk PRISM
Cornell Cooperative Extension: Saratoga
50 West High St.
Ballston Spa, NY 12020

Findings and Recommendations: No detection as of June 4th, 2019

The Van Dusen Preserve contains 1.8 mi of trails that lead to the Butler Pond Reservoir and continue up to Butler Pond. The preserve is considered an eastern Adirondack Forest with a mix of forest types. The north-east corner was oak-pine forest with interspersed stands of hemlock with a species composition ranging around 40% in the lower stand of trees. Around the reservoir, to the southwest corner of the preserve, the forest was classified as maple-beech with a heavy presence of young hemlock trees, between 40-80% making up the understory.

The preserve and the areas surrounding the ponds should be monitored in the future due to the proximity to Prospect Mountain with in the Adirondack State Park. Due to timing and restricted access, we were unable to reach Butler Pond, however it should be considered for monitoring in the near future due to the strong presence of young hemlocks surrounding the reservoir. For future visits, the City of Glens Falls Water and Sewer Department should be contacted to gain access to viewing areas surrounding the actual pond. Their number is (518) 761-3857. The trees surveyed were in very good health, containing lots of new growth, but it is important to continue surveying areas such as this for early detection and prevention measures. There is a large volume of hemlock trees to give a great segment for point sampling.



The New York State Department of Environmental Conservation provides financial support to The Capital Mohawk PRISM via the Environmental Protection Fund.