



Capital Mohawk PRISM
 Cornell Cooperative Extension | Saratoga
 50 West High St.
 Ballston Spa, NY 12020

HWA Lake Survey May/June 2019

Date: 6.12.2019

Survey Team: Kristopher Williams and Gwendolyn Temple

Project Description: As part of supporting the Cornell Hemlock Initiative, the Capital Mohawk PRISM has surveyed the South Bay, the Southern Portion of Lake Champlain in Washington County, New York. This survey is part of the HWA Lake Survey program that Carri Marschner has coordinated with several partner agencies.

- <https://blogs.cornell.edu/nyshemlockinitiative/>
- [Hemlock Initiative Boat Survey Protocol](#)

Location: DEC Launch 23 Co Rd 7A, Whitehall, NY 12887 (Just Off Route 22 when crossing the South Bay Bridge)

Point of Contact: Caroline (Carri) Marschner
 NYS Hemlock Initiative, Cornell University
cam369@cornell.edu 360-915-4778

Introduction: The Hemlock Initiative has designed a program to survey for HWA surrounding the southern portion of the Adirondack Blue Line in upstate New York. This program is in its pilot year and is seeking to slow the spread of HWA with early identification. The Capital Mohawk PRISM will conduct surveys at the following locations:

1. Moreau State Park Lake, Lake Bonita, and Hudson River Corridor (Saratoga County)
 - <https://www.dec.ny.gov/outdoor/84524.html>
 - <https://parks.ny.gov/parks/attachments/MoreauLakeMoreauLakeStateParkLakeBonitaTrailMap.pdf>
2. Butler and Rush Pond (Warren County)
 - Butler Pond Watershed is located near Rush Pond
 - <https://www.queensbury.net/2015/11/rush-pond-trail/>
3. South Bay (Washington County)
 - <https://www.dec.ny.gov/outdoor/53108.html>
4. Rockwood Lake State Forest
 - <https://www.dec.ny.gov/lands/107041.html>

Invasive Species Survey: South Bay

Common Name	Scientific Name	Locations (GPS)	Survey Type	Status	Time/Survey
TiHemlock Woolly Adelgid (HWA)	Adelges tsugae	43.5753, -73.4369	Early Detection HWA Boat Survey	No Detection No Damage	240 min Bay

Findings and Recommendations: No detection as of June 12th, 2019

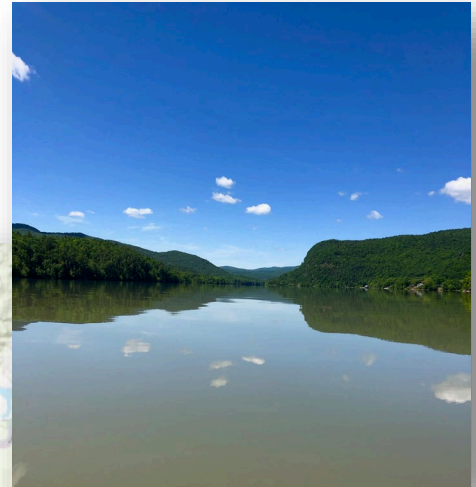
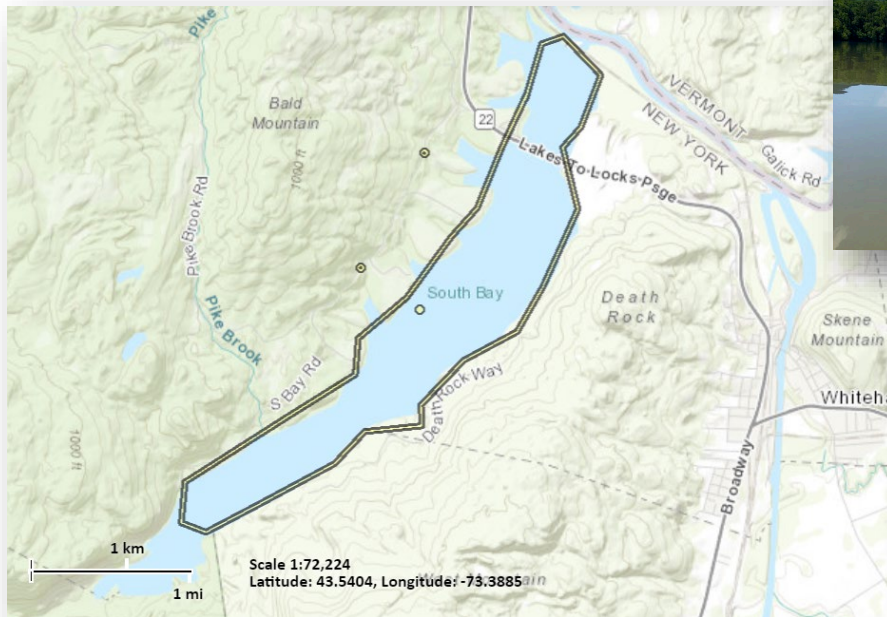
South Bay: Approximately 7 miles of shoreline were surveyed on June 12th for HWA while surveying for aquatic invasive species. This waterbody is not a good location for HWA lake surveys as hemlock trees accounted for less than 5% of the forest composition. The northeastern forest surrounding the lake is predominantly made of pine and oak and the few hemlocks that are present are on the southeastern shore. All hemlock trees observed had new bud growth and were in good health. The northwestern shore was dominated by cedar trees primarily. A

The New York State Department of Environmental Conservation provides financial support to The Capital Mohawk PRISM via the Environmental Protection Fund.



Capital Mohawk PRISM
Cornell Cooperative Extension | Saratoga
50 West High St.
Ballston Spa, NY 12020

round-trip loop in this section is approximately 7-8 miles and the survey itself was completed in less than 3 hours. South Bay is unlike the surrounding shores of Lake George which are dominated by hemlocks on the eastern flank.



The New York State Department of Environmental Conservation provides financial support to The Capital Mohawk PRISM via the Environmental Protection Fund.