



## Capital Region PRISM AIS Survey Report

Date(s): 9-3-2021

Site Name: Partridge Run Wildlife Management Area

Fawn Lake

Site Size: 18 acres

Waterbody Perimeter: 0.7 miles

Mean Depth: --

GPS Location: 42.562074, -74.167873

White Birch Lake

Site Size: 12 acres

Waterbody Perimeter: 0.6 miles

Mean Depth: --

GPS Location: 42.565862, -74.156969

Tubbs Pond

Site Size: 15.5 acres

Waterbody Perimeter: 0.9 miles

Mean Depth: --

GPS Location: 42.570622, -74.177753

Physical Address: Berne, NY 12023

Town: Berne

County: Albany

Property Owner Contact: NYS Department of Environmental  
Conservation

Primary Contact: DEC Region 4 Schenectady Office | (518) 357-2154 |

[Wildlife.r4@dec.ny.gov](mailto:Wildlife.r4@dec.ny.gov)

Secondary Contact: Joseph Nelson - Wildlife Technician II Division of Fish  
and Wildlife | (518)-357-2149 | [joseph.nelson@dec.ny.gov](mailto:joseph.nelson@dec.ny.gov)

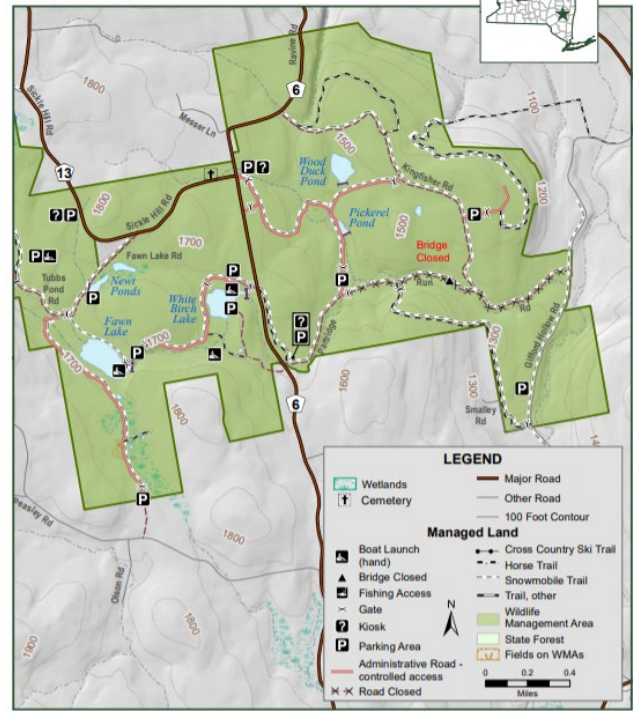
Survey Leader: Lauren Henderson - AIS Coordinator

Phone: 518. 885-8995 Ext. 2215 / Email: [ljh257@cornell.edu](mailto:ljh257@cornell.edu)

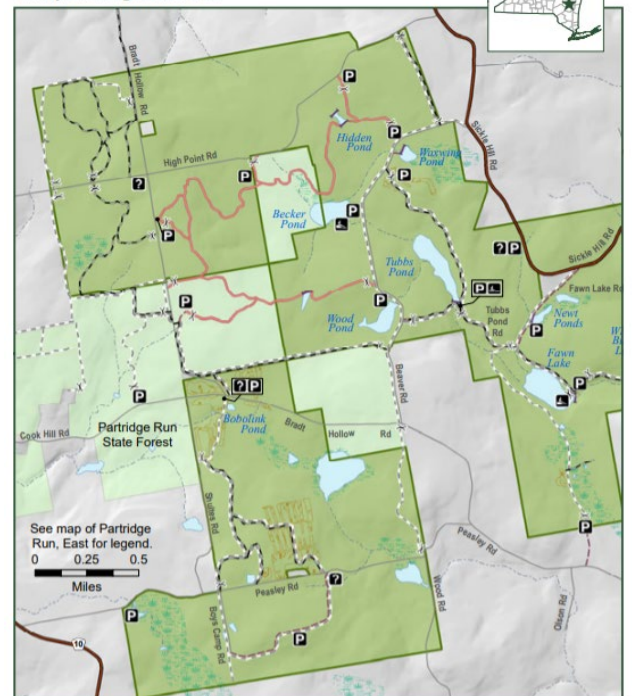
Team Members: Samantha Schultz

iMapInvasives User ID: 19154

### PARTRIDGE RUN, East Wildlife Management Area



### PARTRIDGE RUN, West Wildlife Management Area





## Section 1: Survey Summary

On September 3, 2021 the Capital Region PRISM conducted an aquatic survey on Fawn Lake, White Birch Lake, and Tubbs Pond located within Partridge Run Wildlife Management Area in Albany County. The survey focused on early detection of Tier 1 and 2 aquatic invasive species. Upon completion of the surveys it was determined that Tubbs Pond was free of aquatic invasive species.

### Site Description

#### *Fawn Lake*

Fawn Lake is an 18-acre waterbody located in Partridge Run Wildlife Management Area. The lake substrate is muck with a bottom cover of macrophytes and leaf pack. The northwest end of the lake is very shallow and dominated by elodea and native pondweed.

A cartop boat launch is located at the southeast end of the waterbody. Only non-motorized watercraft are permitted on Fawn Lake. A dam is located at the southeast end of the waterbody.

#### *White Birch Lake*

White Birch Lake is a 12-acre waterbody located in Partridge Run Wildlife Management Area. The lake substrate is comprised of sand, boulders, and muck with a bottom cover of macrophytes and leaf pack.

A cartop boat launch is located on the eastern shore of the waterbody. Only non-motorized watercraft are permitted on White Birch Lake. A dam is located on the northeastern shore of the waterbody.

#### *Tubbs Pond*

Tubbs Pond is a 15.5-acre waterbody located in Partridge Run Wildlife Management Area. The lake substrate is comprised of sand and muck with a bottom cover of macrophytes, leaf pack, and woody debris. A majority of the lake is dominated by elodea and native pondweed.

A cartop boat launch is located on the southern end of the waterbody. Only non-motorized watercraft are permitted on White Birch Lake. A dam is located on the southern shore of the waterbody.

### Survey Techniques

Entire waterbody, top water

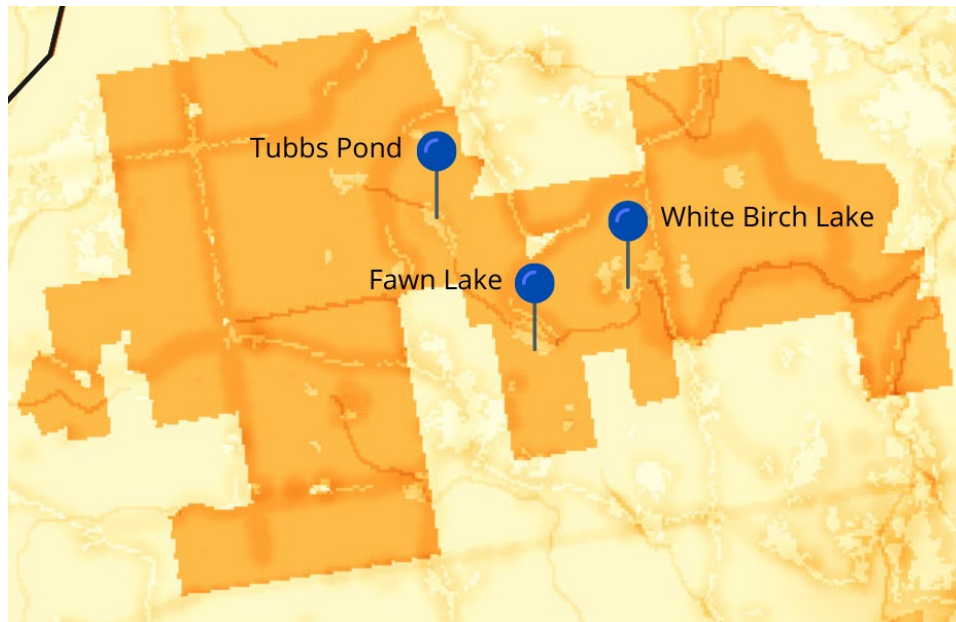
- Top-side (visual)
- Rake toss



## NYS Invasive Species Prioritization Model

Fawn Lake, White Birch, and Tubbs Pond are located within Partridge Run Wildlife Management Area which has a high comprehensive score on the NYS Invasive Species Prioritization Model. Locations with high comprehensive scores have high ecological significance, a high risk of spread of invasives into the area, and high value according to their protected status. Early detection is important in these locations to ensure timely management of new infestations if detected.

### [NYS Invasive Species Prioritization Model](#)



### Does this site contain previously treated infestations?

Yes – Fawn Lake has been treated for water chestnut with annual hand pulling efforts.

## Section 2: Survey Result Summary

### Aquatic Invasive Species Presence

#### *Fawn Lake*

- Water chestnut
  - New York Non-Native Animal Invasiveness Ranking - 82
    - [http://nyis.info/wp-content/uploads/2018/01/61a2d\\_Trapa-natans-NYS.pdf](http://nyis.info/wp-content/uploads/2018/01/61a2d_Trapa-natans-NYS.pdf)

Common Name	Scientific Name	Location (GPS)	Growth Type	Phenology	Abundance
Water chestnut	<i>Trapa natans</i>	42.563018, - 74.168333	Floating	Fruit ripening	Sparse

**Growth Type:** Tree, Shrub, Vine, Ground Cover, Herbaceous, Riparian, Submerged, Floating, Emergent, Wetland, Pest, Animal

**Phenology:** Flowering, Leaf unfolding, fruit ripening, leaf color change, dormant, swarming, spawning, emergence (insects), migrating, in seed, senesce

**Distribution/Abundance:** Trace (single plant/clump), Sparse (scattered plants/clumps), Dense plants/clumps, Linearly scattered, Monoculture



### Native Species Presence

- Eelgrass (*Vallisneria americana*)
- Large-leaf pondweed (*Potamogeton amplifolius*)
- Waterweed (*Elodea spp.*)
- Spatterdock (*Nuphar variegata*)
- Robbin’s pondweed (*Potamogeton robbinsii*)
- Coontail (*Ceratophyllum demersum*)

### White Birch Lake

- Banded mysterysnail
  - New York Non-Native Animal Invasiveness Ranking – n/a

Common Name	Scientific Name	Location (GPS)	Growth Type	Phenology	Abundance
Banded mysterysnail	<i>Viviparus georgianus</i>	42.565496, -74.156042	Animal	--	Densely populated

**Growth Type:** Tree, Shrub, Vine, Ground Cover, Herbaceous, Riparian, Submerged, Floating, Emergent, Wetland, Pest, Animal  
**Phenology:** Flowering, Leaf unfolding, fruit ripening, leaf color change, dormant, swarming, spawning, emergence (insects), migrating, in seed, senesce  
**Distribution/Abundance:** Trace (single plant/clump), Sparse (scattered plants/clumps), Dense plants/clumps, Linearly scattered, Monoculture

### Native Species Presence

- Eelgrass (*Vallisneria americana*)
- Waterweed (*Elodea spp.*)
- Robbin’s pondweed (*Potamogeton robbinsii*)
- Large-leaf pondweed (*Potamogeton amplifolius*)
- Coontail (*Ceratophyllum demersum*)
- Musk grass

### Tubbs Pond

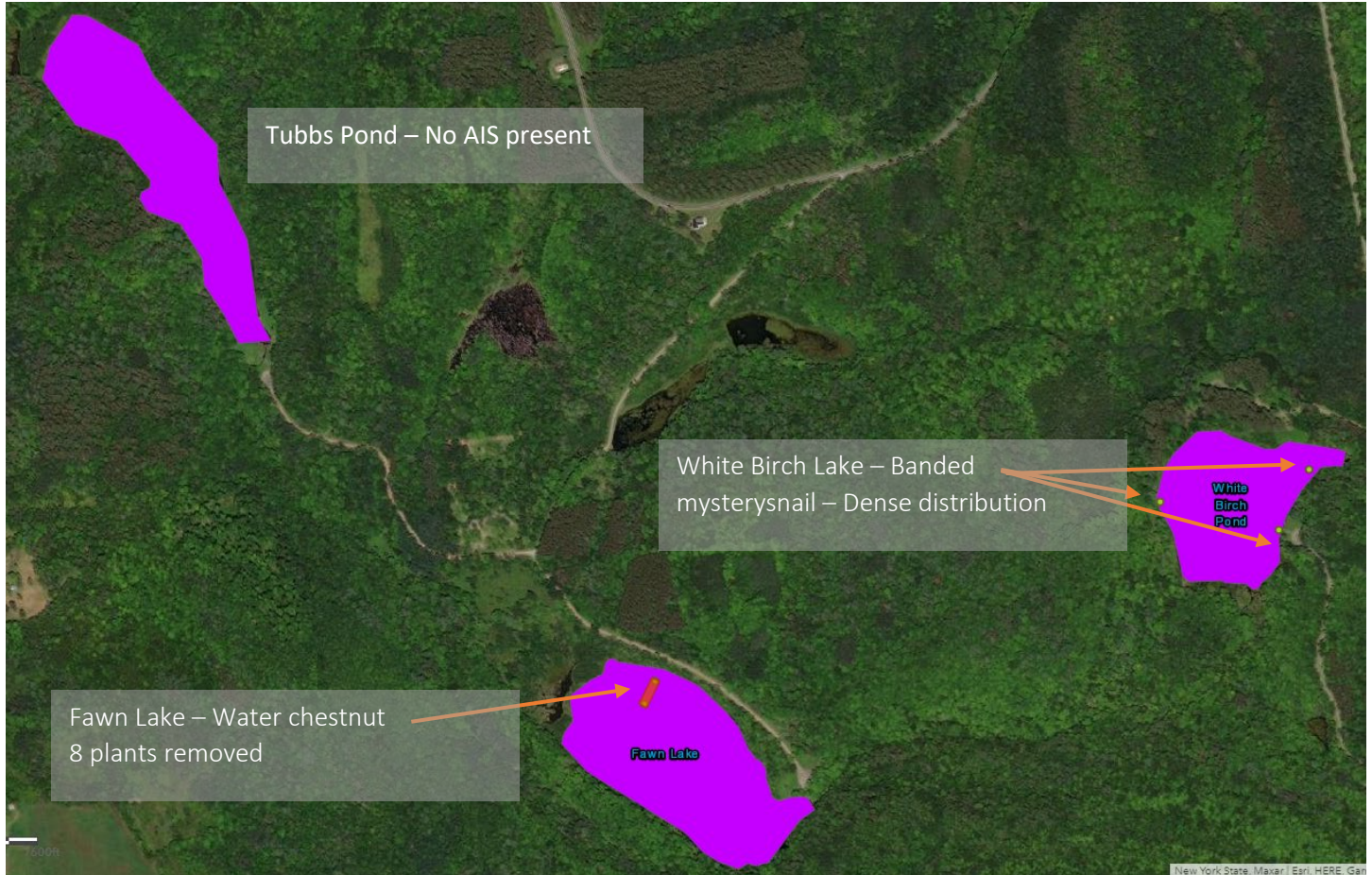
No aquatic invasive species detected.

### Native Species Presence

- Waterweed (*Elodea spp.*)
- Coontail (*Ceratophyllum demersum*)
- Large-leaf pondweed (*Potamogeton amplifolius*)
- Eelgrass (*Vallisneria americana*)
- Pondweed (*Potamogeton spp.*)



## Map



## Section 3: Summary of Recommendations

### Prevention

Ensure ample AIS signage is present within the wildlife management area at each waterbody's launch area.

### Management

Partridge Run Wildlife Management Area is currently managing the water chestnut infestation in Fawn Lake on an annual basis. It is recommended that water chestnut management continues on an annual basis in late June-early August to reduce chances of fruits dropping and reducing the seed bank.

There is currently no recommended control method for Banded mysterysnail.

### Post-Survey Monitoring

Fawn Lake, White Birch Lake and Tubbs Pond are considered Priority Waterbodies in the Capital Region PRISM. Early detection surveys will be conducted at Partridge Run Wildlife Management Area on a biannual basis to ensure any infestations are detected early when eradication is still possible.

*Will an Invasive Species Management Plan be created?*

- No



[Photos](#)

