



REIST WILDLIFE SANCTUARY SURVEY 2019:

Spencer Barrett, Anna Kuhne, and Kelsey Stevens

Introduction: : In June of 2019, the Terrestrial Invasive Species Coordinator, Spencer Barrett, worked with two interns, from Siena College, to look for early detection invasive species throughout the Capital-Mohawk PRISM. The Siena interns, Anna Kuhne and Kelsey Stevens, focused on terrestrial invasive plant surveys at highly susceptible and valuable habitats throughout the PRISM region. The following is an abridged summary of some of the findings of the survey throughout Rockwood State Forest. The PRISM works throughout 11 counties around the capital region to detect, prevent, and control invasive species.

Project Description: Surveying and scouting for terrestrial invasive plants found on the trails

Dates: June 18th, 2019

Participants: Capital Mohawk Prism, Cornell Cooperative Extension, and NYS DEC

Point of Contact: Hudson-Mohawk Bird Club

County: Schenectady County

Locations and Species Identified:

(Hudson-Mohawk Bird Club): Scouting was done on the trails of the Reist Wildlife Sanctuary which started at the trails adjacent to Schaefer House.

Invasive Species Present at the Reist Wildlife Sanctuary:

Common Name	Scientific Name	Locations (GPS)	Growth Type	Phenology
Common Reed	<i>Phragmites australis</i>	42.78693 -73.88562	Herbaceous	Vegetative
Norway Maple	<i>Acer platanoides</i>	43.11285 -73.57717	Tree	Vegetative
Japanese Barberry	<i>Berberis thunbergii</i>	42.7824 -73.88251	Shrub	Vegetative
Oriental Bittersweet	<i>Celastrus orbiculatus</i>	42.78818 -73.88297	Vine	Vegetative
Dame's Rocket	<i>Hesperis matronalis</i>	42.78772 -73.88096	Tree	Flowering
Honeysuckle	<i>Lonicera spp.</i> (species unknown)	42.78106 -73.8831	Shrub	Seed
Glossy Buckthorn	<i>Frangula alnus</i>	42.78779 -73.88307	Shrub	Vegetative
Multiflora Rose	<i>Rosa multiflora</i>	42.7812 -73.88384	Shrub	Flowering

The New York State Department of Environmental Conservation provides financial support to The Capital Mohawk PRISM via the Environmental Protection Fund.

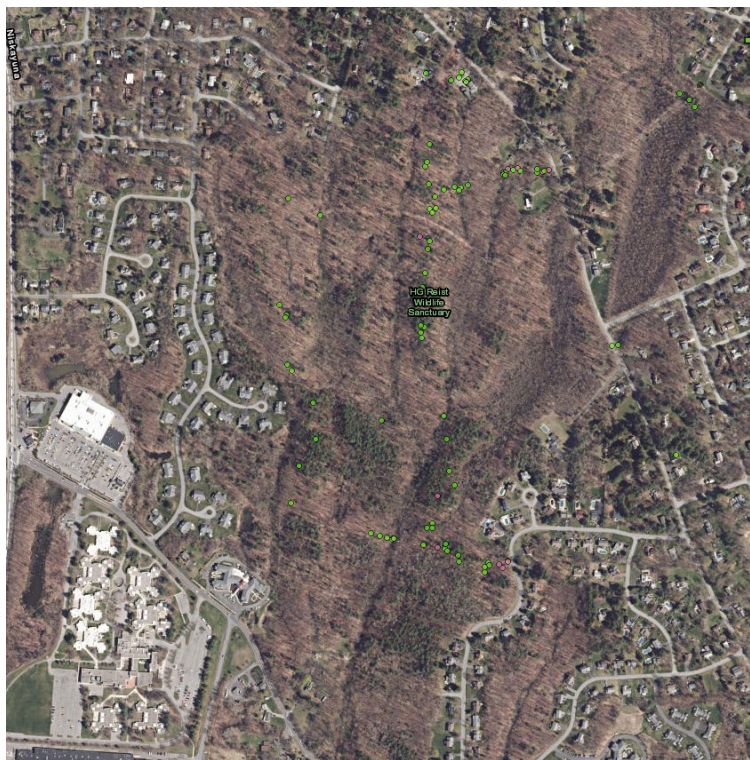


Burning Bush	<i>Euonymus alatus</i>	42.78512 -73.88645	Shrub	Vegetative
Garlic Mustard	<i>Alliaria petiolata</i>	42.78076 -73.88156	Herbaceous	Seed
Purple Loosestrife	<i>Lythrum salicaria</i>	42.78118 -73.88387	Herbaceous	Vegetative
Common Buckthorn	<i>Rhamnus cathartica</i>	42.78145 -73.88292	Shrub	Vegetative

Native Community Types: Hardwood Forest

Recommendations for the Future: Further scouting, mapping, and prioritization of terrestrial invasive plant species done at this site to determine species that may be most harmful to native species in the surrounding areas.

Figure 1: Map of area surveyed immediately within or around Reist Wildlife Sanctuary. Terrestrial plant records were reviewed and confirmed and show in green and forest pest records are shown in pink as unconfirmed species.



The New York State Department of Environmental Conservation provides financial support to The Capital Mohawk PRISM via the Environmental Protection Fund.