



SARATOGA SANDPLAINS SPECIES SURVEY 2019:

Anna Kuhne, Lauren Mercier, and Kelsey Stevens

Introduction: : In July of 2019, the Terrestrial Invasive Species interns, from Siena College, and the education and outreach coordinator went to look for early detection invasive species throughout the Capital-Mohawk PRISM. The Siena interns, Anna Kuhne and Kelsey Stevens, focused on terrestrial invasive plant surveys at highly susceptible and valuable habitats throughout the PRISM region. The following is an abridged summary of some of the findings of the survey throughout the Saratoga Sandplains of the Wilton Wild Preserve. The PRISM works throughout 11 counties around the capital region to detect, prevent, and control invasive species.

Project Description: Surveying terrestrial invasive plants in the park

Dates: June 28th, 2019

Participants: Capital Mohawk Prism, Cornell Cooperative Extension, and NYS DEC

Point of Contact: Info.R5@dec.ny.gov

County: Saratoga County

Locations and Species Identified:

Hudson Crossings (NYS DEC Region 5 Brook Office): Scouting was done on the trails throughout the Saratoga Sandplains / Wilton Wildlife Preserve.

Invasive Species Present at (SARATOGA SANDPLAINS)

Common Name	Scientific Name	Locations (GPS)	Growth Type	Phenology
Garlic Mustard	Alliaria petiolata	43.15483 -73.69801	Herbaceous	Gone to Seed
Japanese Knotweed	Reynoutria japonica	43.15378 -73.69932	Herbaceous	Vegetative
Spotted Knapweed	Centaurea stoebe	43.15692 -73.69523	Herbaceous	Vegetative
Oriental Bittersweet	Celastrus orbiculatus	43.15426 -73.70199	Vine	Vegetative
Black Locust	Robinia pseudoacacia	43.1578 -73.69535	Tree	Vegetative
Honeysuckle	Lonicera spp	43.15462 -73.69831	Shrub	In Seed
Common Reed	Phragmites australis	43.154 -73.70012	Herbaceous	Vegetative
Water Chestnut	Trapa natans	43.15373 -73.69926	Aquatic	Vegetative
Great Mullein	Verbascum thaspus	43.1548 -73.69806	Herbaceous	Vegetative
Crown Vetch	Coronilla varia	43.15378 -73.69591	Herbaceous	Flowering
Japanese Hops	Humulus japonicus	43.15466 -73.6983	Herbaceous	Vegetative
Birdfoot Deervetch	Lotus corniculatus	43.15353 -73.6959	Herbaceous	Flowering



Dominant Native Plants: Sugar maple, blueberries, hemlocks, princess pines, ground cedars, lupine, and ferns

Native Community Types: Forest and sandy plains

Treatment Method: N/A

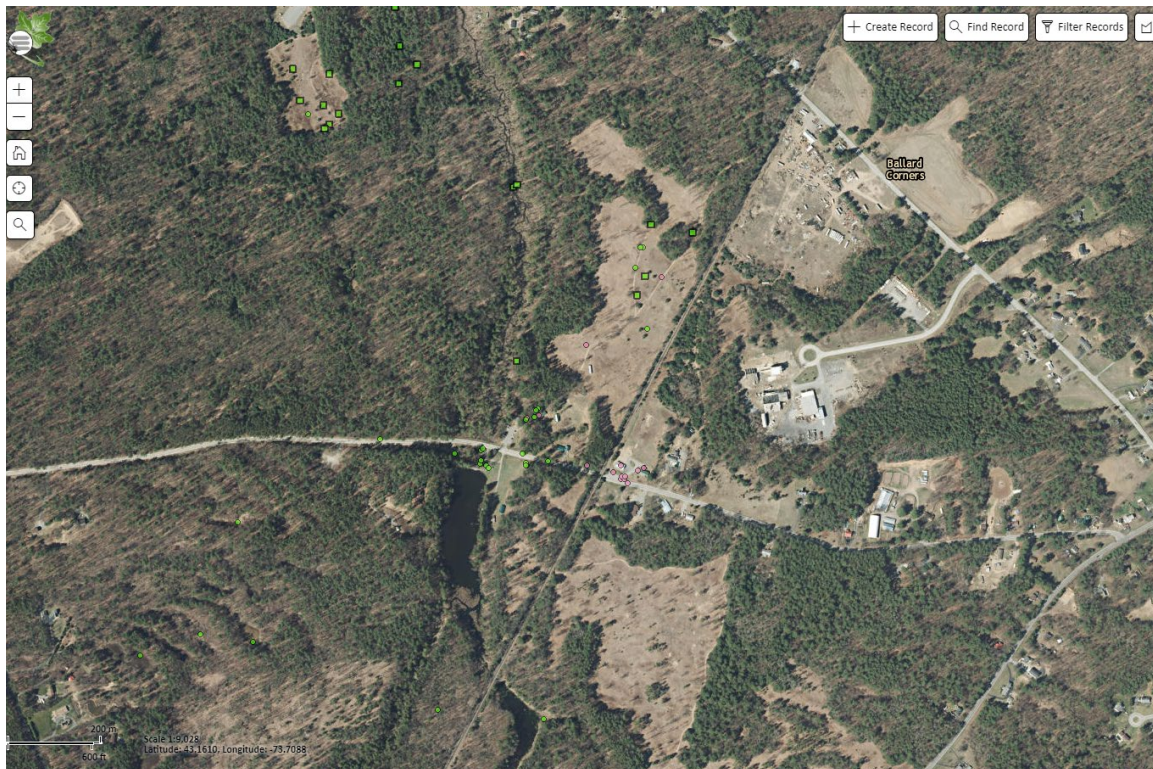
Summary of Work Completed:

1. Scouting and surveying for invasive terrestrial plants

Recommendations for the Future:

Contact Anna Kuhne at av13kuhn@siena.edu, Lauren Mercier at lnm47@cornell.edu, or Kelsey Stevens at kao04stev@siena.edu for any questions regarding this report.

Figure 1. Map of points taken during scouting and surveying of invasive terrestrial plants at the Saratoga Sandplains of the Wilton Wildlife Preserve in Saratoga County.





Capital Mohawk PRISM
Partnership for Regional
Invasive Species Management

Cornell Cooperative Extension | Saratoga
50 West High St.
Ballston Spa, NY 12020
(518) 885-8995

Figure 2. Oriental Bittersweet at the Saratoga Sandplains of the Wilton Wildlife Preserve



Figure 3. Great Mullein / Common Mullein at the Saratoga Sandplains of Wilton Wildlife Preserve



The New York State Department of Environmental Conservation provides financial support
to The Capital Mohawk PRISM via the Environmental Protection Fund



Department of
Environmental
Conservation