



## Capital Region PRISM AIS Monitor Report

### Second Pond, Grafton Lakes State Park

#### About This Priority Waterbody

Second Pond embodies 31 acres with a depth averaging 14 feet, and a maximum depth of 25 feet. Located in Rensselaer County, the waterbody connects to Mill Pond.

The lake is regularly utilized for fishing activities and has an undeveloped shoreline. Public access to Second Pond is provided at a hand launch located off of N. Long Pond Road. An additional smaller hand launch is accessible from the Second Pond parking lot. Electric motors are permitted only. The bottom cover of the lake is primarily comprised of muck/sand/macrophytes. Brown trout, bass, chain pickerel, bluegill, and more are documented. This waterbody is located in Grafton Lakes State Park and is overseen by OPRHP.



#### Invasive Species Previously Recorded at Second Pond

Common Name	Scientific Name	Location (GPS)	Growth Type	Phenology	Abundance
Eurasian Water-milfoil	<i>Myriophyllum spicatum</i>	Multiple locations	Submerged	Plant	Sparse/Dense
Banded Mysterysnail	<i>Viviparus georgianus</i>	Multiple locations	Animal	Animal	Unknown

**Growth Type:** Tree, Shrub, Vine, Ground Cover, Herbaceous, Riparian, Submerged, Floating, Emergent, Wetland, Pest, Animal

**Phenology:** Flowering, Leaf unfolding, fruit ripening, leaf color change, dormant, swarming, spawning, emergence (insects), migrating, in seed, senesce

**Distribution/Abundance:** Trace (single plant/clump), Sparse (scattered plants/clumps), Dense plants/clumps, linearly scattered, Monoculture

#### iMapInvasives Confirmed Aquatic Invasive Species Observations





## Capital Region PRISM AIS Early Detection Survey

On June 21<sup>st</sup>, 2023 the Capital Region PRISM conducted an aquatic survey on Second Pond located in Rensselaer County. The survey focused on early detection of Tier 1 and 2 aquatic invasive species. Upon completion of the surveys it was determined that Eurasian water-milfoil is present in Second Pond. Eurasian water-milfoil is present throughout the waterbodies littoral zone in sparse/dense populations. An unidentified macroalgae warrants a follow up survey this season when bulbils are fully developed.

General Information	
<b>Waterbody Name:</b> Second Pond	<b>Date of Survey:</b> June 21 <sup>st</sup> , 2023
<b>Survey Lead:</b> Hannah Coppola	<b>Time to Conduct Survey:</b> 3.5 hours
<b>Team Members:</b> N/A	<b>Address:</b> Second Pond, Grafton Lakes State Park
<b>iMapInvasives User ID:</b> 21052	<b>County:</b> Rensselaer
<b>Property Owner Contact:</b> OPRHP	<b>Coordinates:</b> 42.780079, -73.447466
<b>Date of Last Survey:</b> 7/28/2020	<b>Waterbody Acreage:</b> 31 acres
<b>Recommended Date of Next Survey:</b> 2025	<b>Average Depth:</b> 14 feet
<b>Has This Site Received Previous Management?</b> N/A <i>If so by who, when, what?</i>	

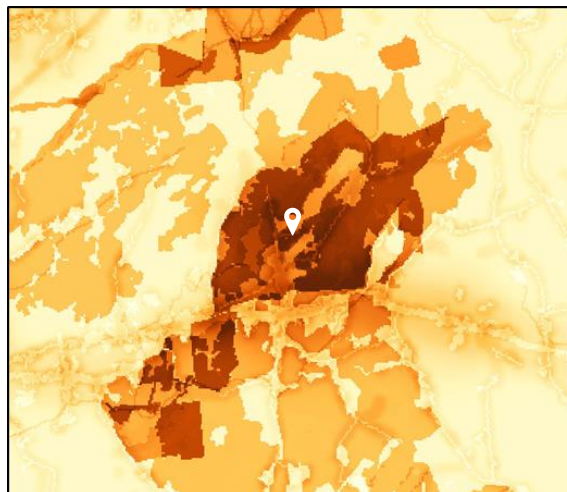
## Survey Techniques

This survey was conducted using top-side (visual) and meandering rake toss methodology.

## New York State Invasive Species Prioritization Model

Second Pond is located near/contains an area with a high to very high comprehensive score on the NYS Invasive Species Prioritization Model. Locations with high comprehensive scores have high ecological significance, a high risk of spread of invasives into the area, and high value according to their protected status. Early detection is important in these locations to ensure timely management of new infestations if detected.

### [NYS Invasive Species Prioritization Model](#)





## Aquatic Invasive Species Presence

Common Name	Scientific Name	Location (GPS)	Growth Type	Phenology	Abundance
Eurasian Water-milfoil	<i>Myriophyllum spicatum</i>	Multiple locations	Submerged	Plant	Sparse/Dense
<b>Unconfirmed:</b> Starry Stonewort	<i>Nitellopsis obtusa</i>	Multiple locations outside of littoral zone.	Submerged	Macroalgae	Sparse/Dense

### Eurasian watermilfoil

- New York Non-Native Animal Invasiveness Ranking – 100
- [https://nyis.info/wp-content/uploads/2018/01/5cdc8\\_Myriophyllum.spicatum.NYS\\_.pdf](https://nyis.info/wp-content/uploads/2018/01/5cdc8_Myriophyllum.spicatum.NYS_.pdf)

### Native Species Presence

Common Name(s)	Scientific Name
Spatterdock / cow lily	<i>Nuphar variegata</i>
Watershield	<i>Brasenia schreberi</i>
Robbins pondweed	<i>Potamogeton robbinsii</i>
Large leaf pondweed	<i>Potamogeton amplifolius</i>

## Summary of Recommendations

### Prevention

Prevention efforts are recommended to reduce the chance of new aquatic invasive species introductions into Second Pond. The restricted electric motor access to the lake helps prevent unwanted species being introduced through reduction of visitors. Ensuring clean, drain, dry practices are being followed when transporting watercraft from one waterbody to another is also recommended. Identifying and reporting any suspected aquatic invasive species is encouraged to ensure early detection. Collection of the macroalgae should be done when bulbils are fully developed.

### Survey Photos

