



STOCKPORT FLATS INVASIVE SPECIES SURVEY 2019:

Anna Kuhne, Lauren Mercier, and Kelsey Stevens

Type of Work Performed: Survey for terrestrial invasive species

Date: August 8th, 2019

Address: Stockport Creek, Stockport, NY 12173

County: Columbia

Latitude and Longitude: 42.310956, -73.771416

Website: <https://www.dec.ny.gov/lands/92355.html>

Lead Contact Information for Project: Lauren Mercier

Site Owner Contact Information: NYS DEC 845-889-4745

Project Description: A terrestrial invasive species survey was done at Stockport Creek and the surrounding and related areas to get a full idea of the present invasive species.

Invasive Species Present at Stockport Flats:

Common Name	Scientific Name	Locations (GPS)	Growth Type	Phenology	Distribution/ Abundance
Tree of Heaven	<i>Ailanthus altissima</i>	42.35723 -73.78931	Tree	In flower	Record from 2018
Japanese Barberry	<i>Berberis thunbergii</i>		Shrub		
Oriental Bittersweet	<i>Celastrus orbiculatus</i>	42.35841 -73.78756	Vine	Vegetative	Dense
Black Locust	<i>Robinia pseudoacacia</i>		Tree		
Privet	<i>Ligustrum spp</i>	42.35856 -73.7888	Shrub	Record from 2018	Record from 2018
Amur Honeysuckle	<i>Lonicera maackii</i>	42.3602 -73.7861	Shrub	In Seed	Record from 2017
Multiflora Rose	<i>Rosa multiflora</i>	42.35705 -73.78765	Shrub	Vegetative	Dense
Water Chestnut					
Siberian Elm	<i>Ulmus pulima</i>	42.35977 -73.78822	Tree	Vegetative	Record from 2018
Mugwort	<i>Artemisia vulgaris</i>	42.35777 -73.78908	Herbaceous	Vegetative	Dense
Spotted Starthistle	<i>Centaurea stoebe</i>	42.35838 -73.78744	Herbaceous	In flower	Dense



Brown Starthistle	<i>Centaurea jacea</i>	42.35849 -73.78734	Herbaceous	In flower	Dense in parking lot
Field Bindweed	<i>Convolvulus arvensis</i>	42.35843 -73.78735	Vine	In flower	Dense in parking lot
Black Swallow-wart	<i>Vincetoxicum louseae</i>	42.35804 -73.78865	Herbaceous	In flower	Single clump
Wild Carrot	<i>Daucus carota</i>	42.35837 -73.78758	Herbaceous	In flower	Dense
Cypress Spurge	<i>Euphorbia cyparissias</i>	42.3582 -73.78819	Herbaceous	Vegetative	Single clump
Ground Ivy	<i>Glechoma hederacea</i>	42.35718 -73.7878	Herbaceous	Vegetative	Dense along trail
Purple Loosestrife	<i>Lythrum salicaria</i>	42.35818 -73.78731	Herbaceous	In flower	Dense
Honeysuckle	<i>Lonicera spp</i>	42.35807 -73.78747	Shrub	In seed	Dense
Japanese Stiltgrass	<i>Microstegium vimineum</i>	42.35813 -73.78874	Herbaceous	Vegetative	Single patch
Common Buckthorn	<i>Rhamnus cathartica</i>	42.35832- 73.78762	Tree	In seed	Dense
Black Locust	<i>Robinia pseudoacacia</i>	42.35844 -73.7873	Tree	Vegetative	Dense
Stringy Stonecrop	<i>Sedum sarmentosum</i>	42.35781 -73.78904	Herbaceous	Vegetative	Single patch
Chicory	<i>Cichorium intybus</i>	42.32645 -73.7629	Herbaceous	In flower	Dense
Birdfoot Deervetch	<i>Lotus corniculatus</i>	42.32673 -73.76294	Herbaceous	In flower	Dense
Emerald Ash Borer	<i>Agrilus planipennis</i>	42.30929 -73.77183	Pest	N/A	Record from 2018
Garlic Mustard	<i>Alliaria petiolate</i>	42.30999 -73.77078	Herbaceous	Record from June 2018	Record from 2018
White Mulberry	<i>Morus alba</i>	42.31064 -73.77214	Tree	Vegetative	Dense
Knapweed	<i>Centaurea</i>	42.31096 -73.77227	Herbaceous	Record from 2018	Record from 2018
Canada Thistle	<i>Cirsium arvense</i>	42.31017 -73.7711	Herbaceous	Record from June 2018	Record from 2018
Dame's Rocket	<i>Hesperis matronalis</i>	42.31025 -73.77044	Herbaceous	In flower	Record from June 2018
Privet	<i>Ligustrum spp</i>	42.30996 -73.77166	Shrub	In seed	Record from June 2018
Reed Canarygrass	<i>Phalaris arundinacea</i>	42.31027 -73.77098	Herbaceous	In seed	Record from June 2018
Tufted Vetch	<i>Vicia cracca</i>	42.31023 -73.77019	Herbaceous	Vegetative	Record from June 2018
Water Chestnut	<i>Trapa natans</i>	42.31081 -73.77221	Aquatic	In Seed	Dense



Capital Mohawk PRISM Strongly Recommends Uploading Points into <https://www.imapinvasives.org/>

Native Community Types: Wetland

Dominant Native Plants Present: Sugar maple and oak trees

Summary of Work Completed:

1. Survey throughout Stockport Flats for terrestrial invasive plant species.

Recommendations for the Future: continue to survey for and document terrestrial invasive plant species

Contact the Capital Mohawk Prism <http://www.capitalmohawkprism.org/>

Figure 1. Map of Stockport Flats which is in Columbia County, data points were entered at Nutton Hook, Brickyard WMA and Stockport Creek

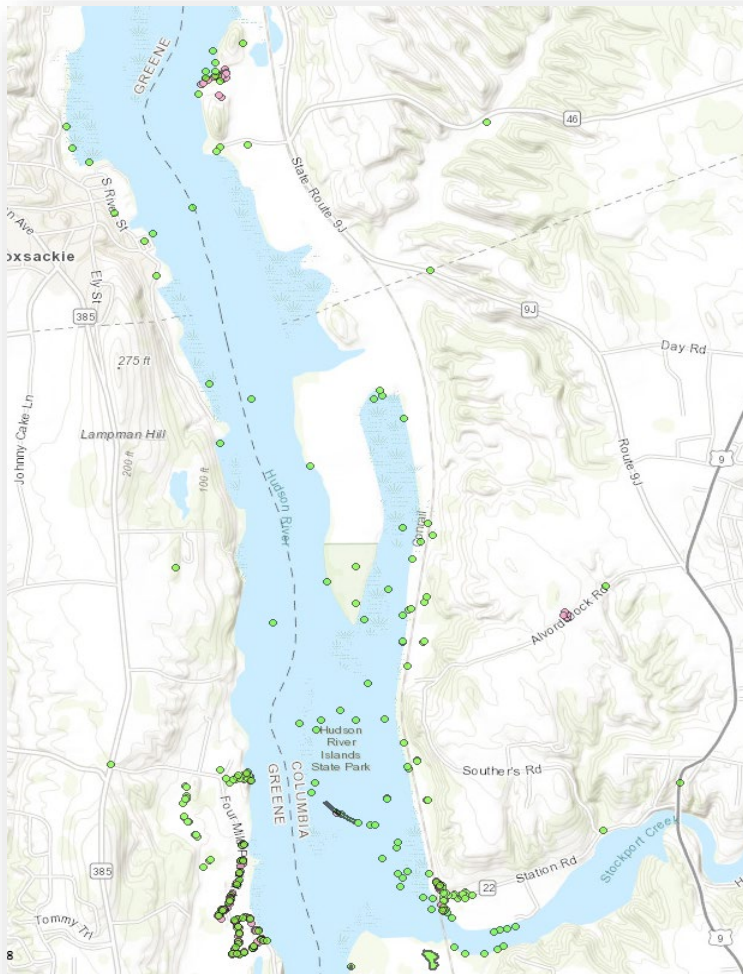




Figure 2, 3, 4. Figure 2 is a White Mulberry at Stockport Creek on the Stockport Flats property. Figure 3 is Chicory at the Brickyard WMA on the Stockport Flats property. Figure 4 is Stringy Stone Crop at Nutton Hook on the Stockport flats Property.

Fig 2



Fig 3



Fig 4

