



# WASHINGTON COUNTY GRASSLANDS INVASIVE SPECIES

## SURVEY 2019:

Anna Kuhne, Lauren Mercier, and Kelsey Stevens

**Type of Work Performed:** Terrestrial invasive species surveying was done on the trail within the property

**Date:** August 1, 2019

**Address:** 390 Black Horse Rd, Fort Edward, NY 12828

**County:** Washington County, NY

**Latitude and Longitude:** 43.245657, -73.559227

**Website:** <http://www.dec.ny.gov/outdoor/97661.html>

**Lead Contact Information for Project:** Lauren Mercier, Capital Mohawk PRISM

**Site Owner Contact Information:** DEC Region 5 Ray Brook Office

**Project Description:** Surveying for terrestrial invasive species was done and points for the species were uploaded on to iMapInvasives.

***Invasive Species Present at Wahsington County Grasslands:***

Common Name	Scientific Name	Locations (GPS)	Growth Type	Phenology	Distribution/ Abundance
Chicory	<i>Cichorium intybus</i>	43.2428 -73.55672	Herbaceous	Flowering	Sparse
Bull Thistle	<i>Cirsium vulgare</i>	43.24088 -73.55564	Herbaceous	Flowering	Linearly Scattered
Wild Carrot	<i>Daucus carota</i>	43.24261 -73.5662	Herbaceous	Flowering	Linearly Scattered
Honeysuckle	<i>Lonicera spp</i>	43.24276 -73.55669	Shrub	In Seed	Linearly Scattered
Birdfoot Deervetch	<i>Lotus corniculatus</i>	43.23969 -73.55561	Herbaceous	Flowering	Linearly Scattered
Purple Loosestrife	<i>Lythrum salicaria</i>	43.24004 -73.55523	Herbaceous	Flowering	Sparse
Yellow Sweet Clover	<i>Melilotus officinalis</i>	43.2438 -73.55732	Herbaceous	Flowering	Sparse
Wild Parsnip	<i>Pastinaca sativa</i>	43.23966 -73.55567	Herbaceous	In Seed	Linearly Scattered
Reed Canarygrass	<i>Phalaris arundinacea</i>	43.245 -73.5587	Herbaceous	In Seed	Monoculture (whole park)
Common Buckthorn	<i>Rhmanus cathartica</i>	43.24278 -73.55669	Tree	In Seed	Linearly Scattered
Tufted Vetch	<i>Vicia cracca spp</i>	43.23895 -73.55621	Herbaceous	Flowering	Linearly Scattered



Capital Mohawk PRISM Strongly Recommends Uploading Points into <https://www.imapinvasives.org/>

**Native Community Types:** Grasslands

**Dominant Native Plants Present:** Raspberry, oak

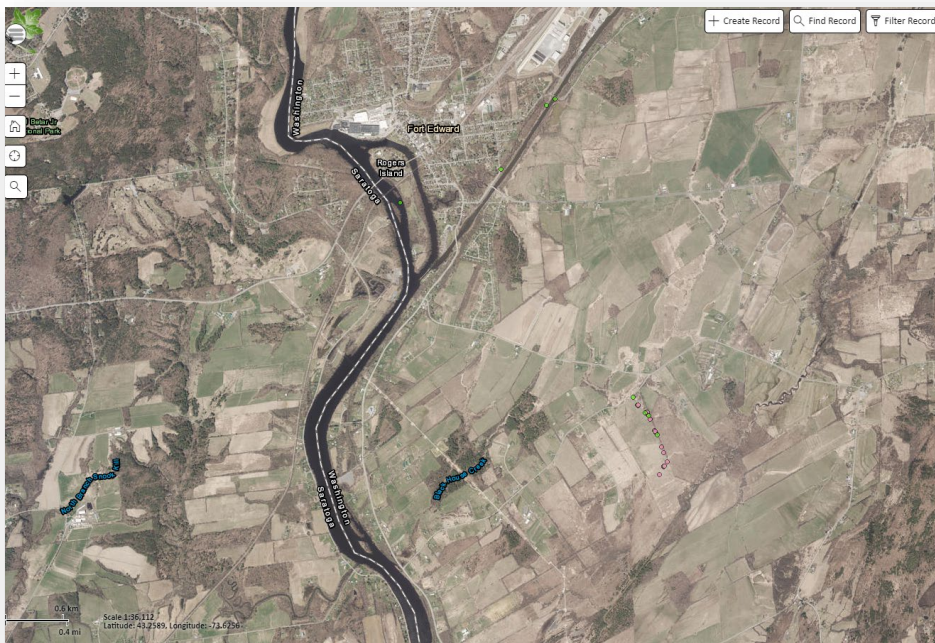
**Summary of Work Completed:**

1. Survey for terrestrial invasive species

**Recommendations for the Future:** Continue surveying to make sure that the invasive species do not disturb the endangered short – eared owl present at the Washington County Grasslands.

Contact the Capital Mohawk Prism <http://www.capitalmohawkprism.org/>

**Figure 1. Map of points taken at the Washington County Grasslands in fort Edward, New York**





**Figure 2. Honeysuckle along the trail of the Washington County Grasslands In Fort Edward, New York.**

