



## NEILMANN PARCEL JAPANESE STILTGRASS REMOVAL 2019:

Anna Kuhne, Lauren Mercier, Kelsey Stevens, and Kristopher Williams

**Type of Work Performed:** Manual removal of Japanese Stiltgrass

**Date:** August 16<sup>th</sup>, 2019

**Address:** 248 Ruggles Rd, Saratoga Springs, NY 12866

**County:** Saratoga County

**Latitude and Longitude:** 43.133274, -73.681978

**Website:** <https://www.wiltonpreserve.org/the-lands/neilmann-parcel>

**Lead Contact Information for Project:** Kristopher Williams

**Site Owner Contact Information:** Executive Director: Margo Bloom Olson (518) 450 – 0321

[mbolson@wiltonpreserve.org](mailto:mbolson@wiltonpreserve.org)

iMap Searched Area Record: [#1044054](#)

iMap Presence Record: [#1026433](#)

iMap Treatment Record: [#16295](#)

**Project Description:** Japanese Stiltgrass was removed at two main sites, to get to the first patch on the yellow loop the team headed left at the fork by the trail head sign. This patch was on the left side of the trail. The Second patch was at the beginning of the orange loop. The patch began to get dense closest to a patch of ferns. The Stiltgrass infestation was on both sides of the trail. The infestation continued down the trail where it was to the right of the fork. All Stiltgrass in these areas was removed. Stiltgrass is an annual and should be removed before going to seed by manual , mechanical or fire.

### ***Invasive Species Present at Neilmann Parcel:***

Common Name	Scientific Name	Locations (GPS)	Growth Type	Phenology	Distribution/ Abundance
Japanese Stiltgrass	<i>Microstegium vimineum</i>	43.13123 -73.68787	Herbaceous	In seed	Two Dense Patches

**Capital Mohawk PRISM Strongly Recommends Uploading Points into** <https://www.imapinvasives.org/>

**Native Community Types:** Maple Oak Beech Forest. / Wetland

**Dominant Native Plants Present:**

Ground Cedar, princess pine, other club mosses, pine trees, ferns, blackberries, raspberries

**Summary of Work Completed:** Manual removal of Japanese Stiltgrass

**Recommendations for the Future:** Future surveying and monitoring of the site for new growth of infestation. If future removal is needed, when removing, double bag the trash bags if heavy. Bring wheel barrel, gorilla cart, and/or wagon to carry out heavy trash bags. Signs should be made for the beginning at the trail head at the individual infestation sites. These signs should warn the public of the issue at hand and suggest brushing off bottoms of boots and fur on pets as to not spread seeds to any other parcels in the Saratoga County. Treatment year 2 of 7 based on seed viability.

Contact the Capital Mohawk Prism <http://www.capitalmohawkprism.org/>



Figure 1. Map of Neilmann Parcel

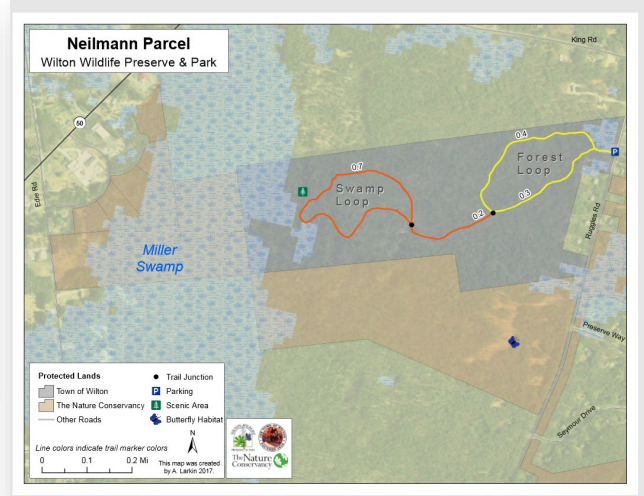


Figure 2. Image of Japanese Stiltgrass at Neilmann Parcel.

